



- Spring return torque: 15 Nm
- Motor torque: 15 Nm
- Spring return running time ± 16 sec
- Working Field 2 ... 10V (Standard)
- Power supply 24V ac, 24V dc
- According to EN 60079-0, EN60079-1,
- EN 60079-31
- Zones 1, 2, 21, 22

Applications

The EXAF spring return actuators are intended for the operation of air damper that perform safety functions (e.g. frost and smoke protection, hygiene, ect.) up to 3 m²

Features

The actuator moves the damper to its working position while tensioning the spring return until it is powered. If the power supply is interrupted the spring moves the damper back to its safe position. The actuator is overload protected.



NEMKO 03 ATEX 1242X

Ex II 2G Ex d IIC T6 Gb

Ex II 2D Ex tb IIIC T67 °C

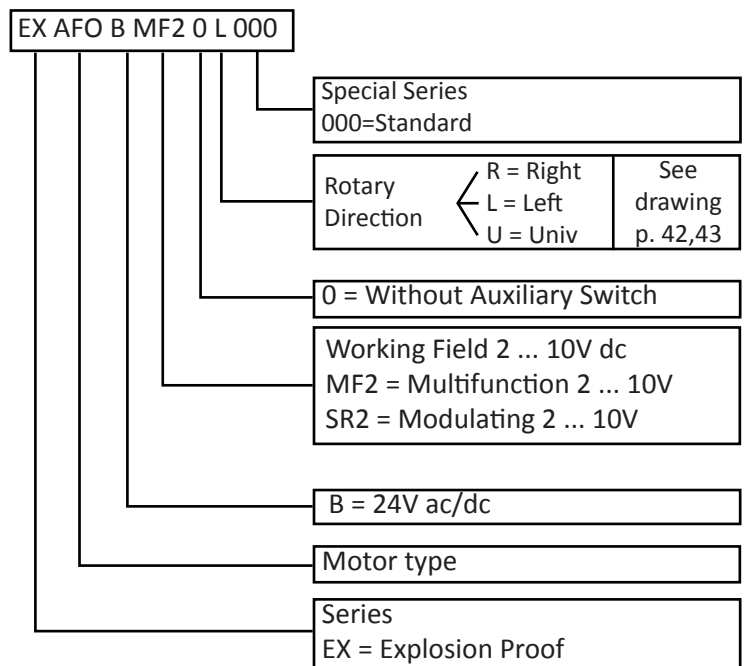
For zone 1, 2, 21, 22

The product may differ from the illustration

The actuator can be mounted directly on the damper shaft if square, 12 x 12 mm or 10 x 10 mm (adaptor included); Several mounting brackets are available for applications where the actuator cannot be directly coupled to the damper shaft. The cable glands are fit for cable diameters from 8 to 10,5 mm.

Product range

| ITEM | Auxiliary Switch |
|----------------------|------------------|
| EXAF 0 B MF2 0 L 000 | None |
| EXAF 0 B MF2 0 R 000 | |
| EXAF 0 B MF2 0 U 000 | |
| EXAF 0 B MF2 0 L 000 | 2 x SPDT |
| EXAF 0 B MF2 0 R 000 | |
| EXAF 0 B MF2 0 U 000 | |



Options available on request:

- Different angle of rotation
- Different wiring length

Technical data

| | |
|--------------------------------|---|
| Motor ans spring return torque | 15 Nm |
| Control Mode | DC 0 ... 10V |
| Working Field | DC 2 ... 10V |
| Feedback | DC 2 ... 10V |
| Angle of rotation | 95° |
| Running time, motor | 150 sec |
| Running time, spring return | ± 16 sec |
| Ambient temperature | -20°C + 50°C |
| Degree of protection | IP66 |
| Housing material | Aluminium baked varnish |
| Maintenance | None |
| Fastening | Terminal block in Ex e box |
| Wiring length | 1m cable |
| Weight | 8.6 Kg |
| Auxiliary switches | 6A (3A) max 250V ac |
| | Switching point 25° e 140° |
| EMC | CE according to 2004/108/EC |
| Low voltage directive | CE according to 2006/95/EEC |
| Halogen – Free wiring | According to IEC 60332-1/3 and According to IEC 60754-1/2 |

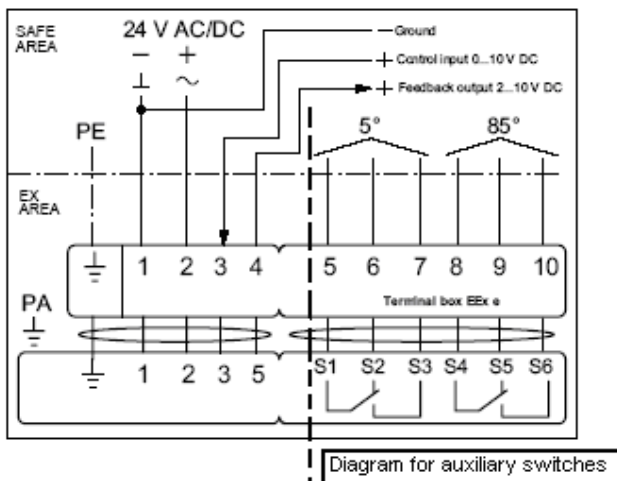
| | |
|-------------------------|-----------------------|
| Power supply | AC 24V ± 20% 50/60 Hz |
| | DC 24V -10/+20% |
| Power consump.: running | 6.0 W |
| Power consump.: At rest | 1.5 W |
| Sizing | 10.0 VA |

Attention:

Only with MFT multifunction technology :

- Running time motor 150 s adjustable
- Control DC 2...10 V, 0...32 V adjustable
- Operating range DC 2...10 V, 0...32 V (adjustable)
- Position feedback DC 2...10 V, 0...10V, (adjustable)

Electrical diagram

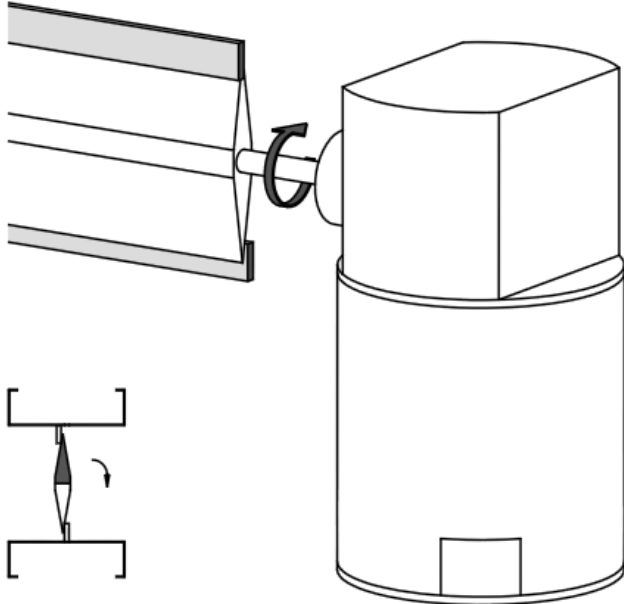


NOTE:

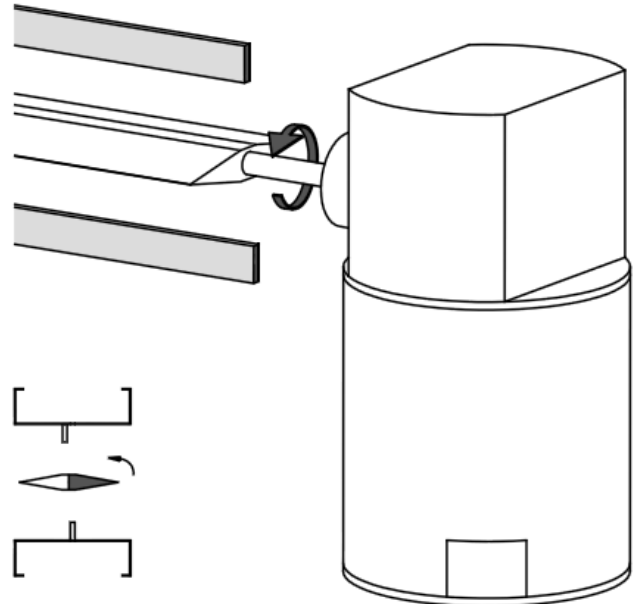
- Read the note about the use and torque requirements of the damper manufacturer
- All electrical wirings must be according to local standards.
- Electrical connections by power off only.
- Ex e junction box must not be opened under any circumstances when the power is on.
- Actuator cable must be installed in a fixed position and protected against damage.
- Avoid excessive vibrations.
- Before switching-on, check that no other equipment is damaged and make sure that supply voltage corresponds with the Actuator's specification.
- Before switching-off check for possible effects on other equipments.
- The Actuator cannot and is not to be opened to guarantee explosion proof and warranty.
- For any problem contact Automatikproduktur.
- The equipment shall be marked "X" since flameproof joint is other than the relevant minimum or maximum according to CEI EN 60079-1. Information on dimension of flameproof joints available at Automatikproduktur.

Rotary Direction "R". For Damper normally closed N.C.

MOTOR
Power: ON
Power on WIRE 2
Control: 2 .. 10 V

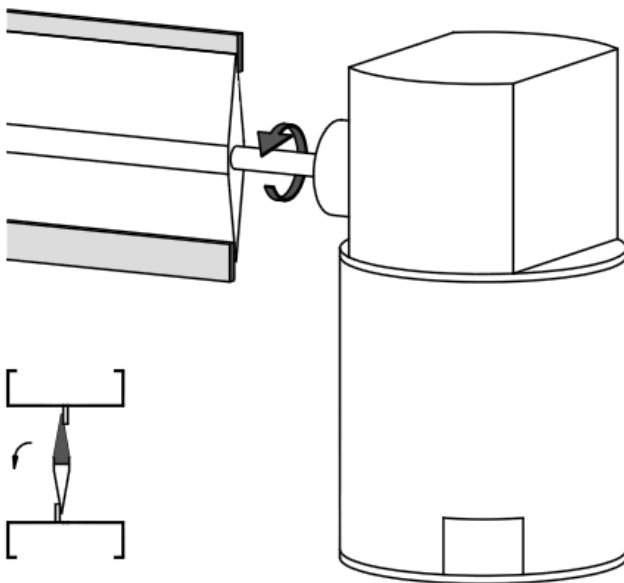


MOTOR or SPRING RETURN
Power: OFF
Power on WIRE 3
Control: 10 .. 2 V

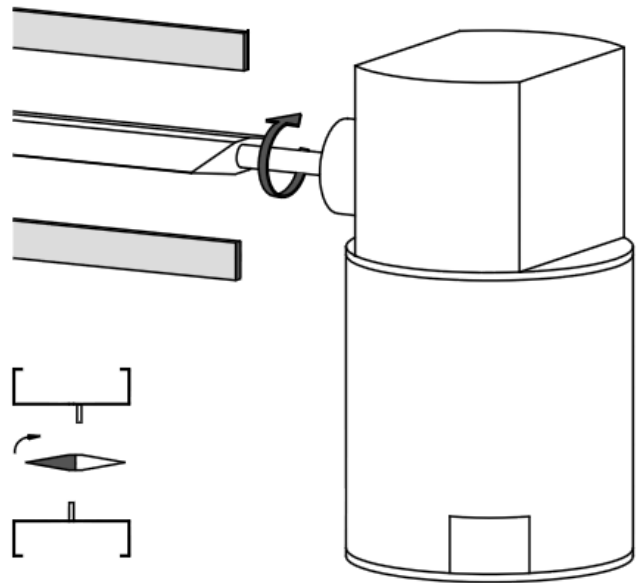


Rotary Direction "L". For Damper normally closed N.C.

MOTOR
Power: ON
Power on WIRE 2
Control: 2 .. 10 V



MOTOR or SPRING RETURN
Power: OFF
Power on WIRE 3
Control: 10 .. 2 V

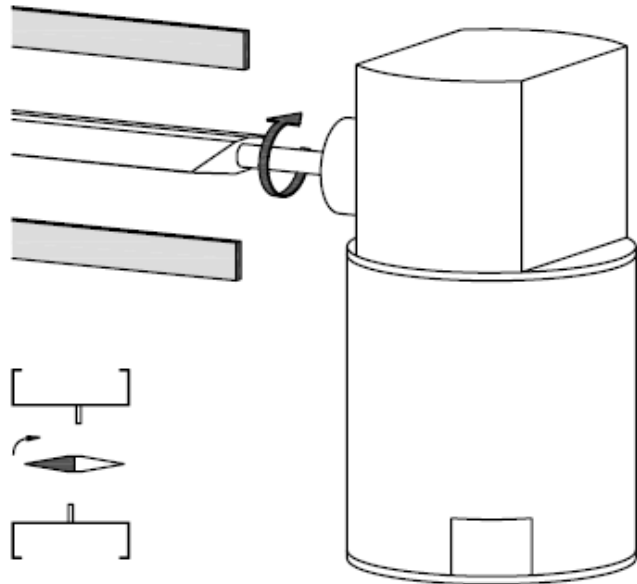


Subject to technical changes without notice. Rev. 00

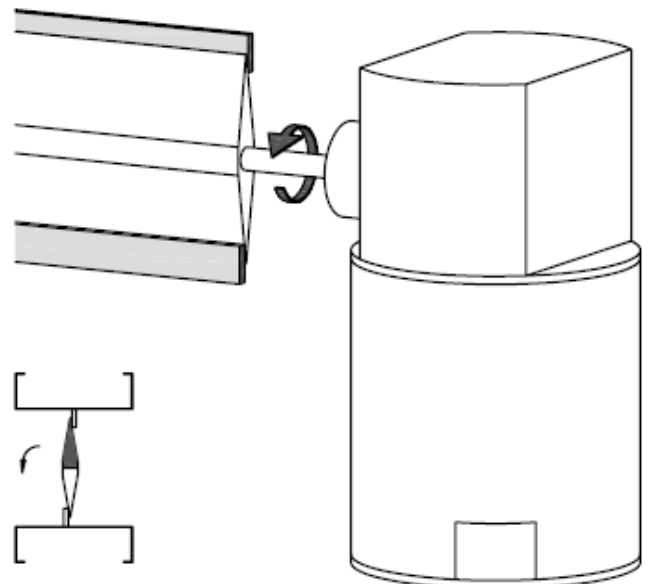


Rotary Direction "R". For Damper normally open N.O.

MOTOR
Power: ON
Power on WIRE 2
Control: 2 .. 10 V

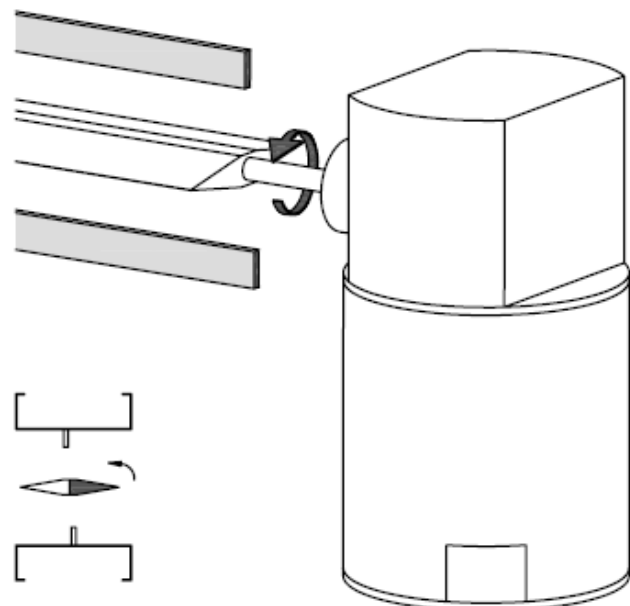


MOTOR or SPRING RETURN
Power: OFF
Power on WIRE 3
Control: 10 .. 2 V

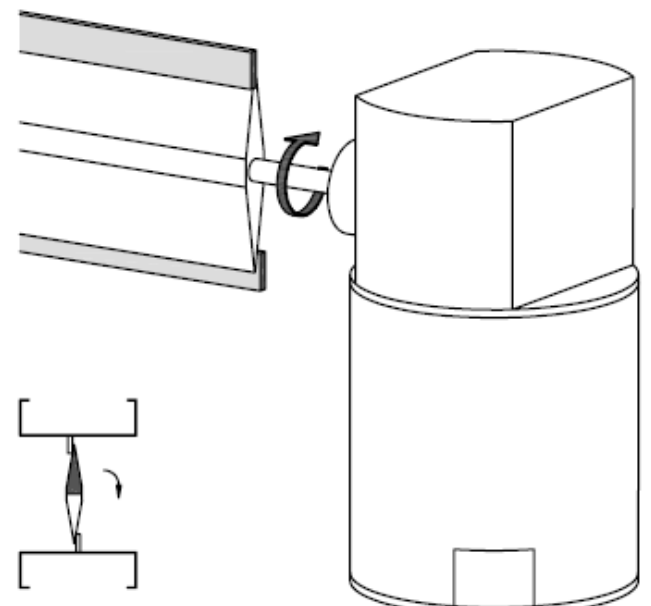


Rotary Direction "L". For Damper normally closed N.O.

MOTOR
Power: ON
Power on WIRE 2
Control: 2 .. 10 V

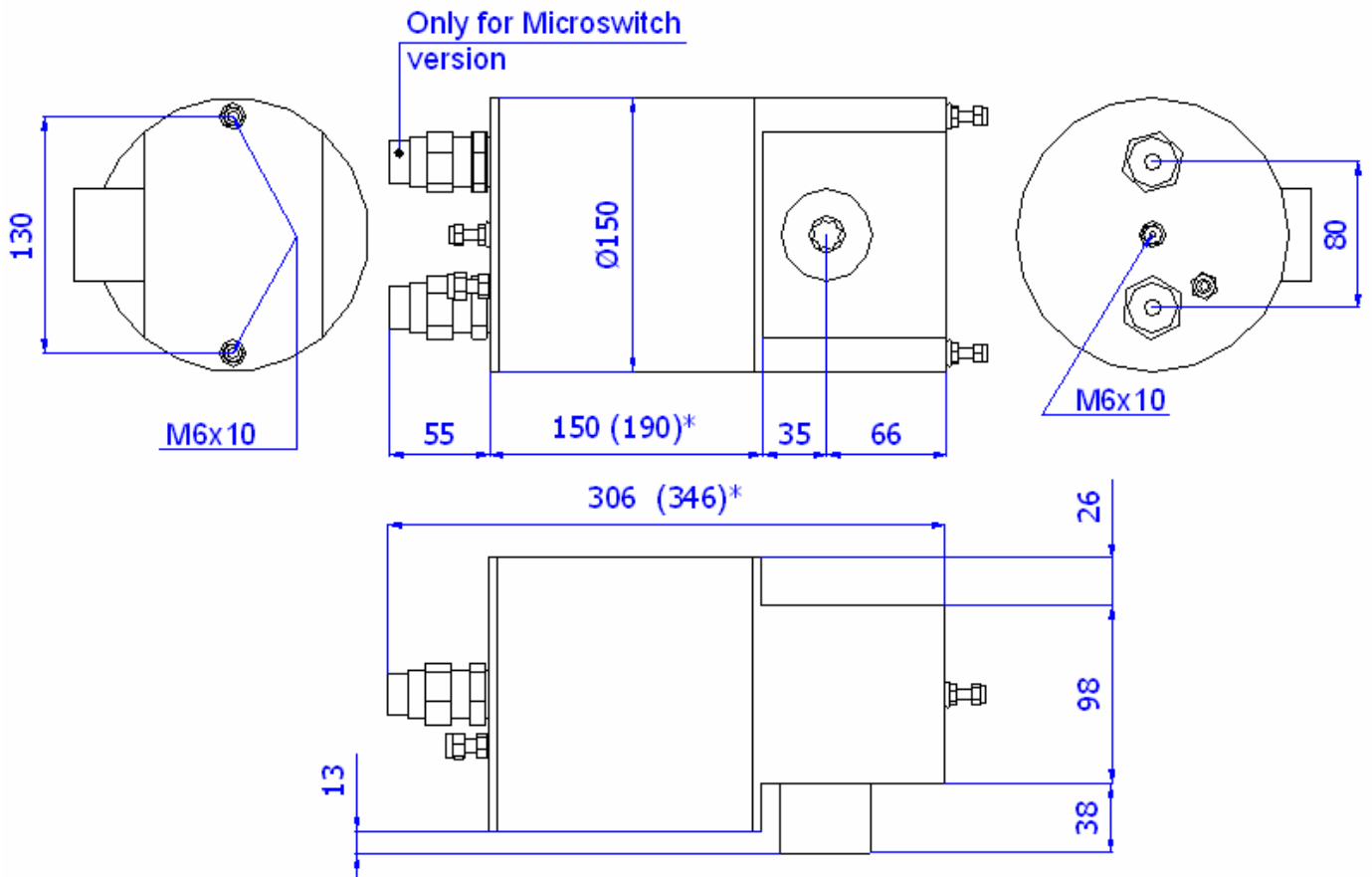


MOTOR or SPRING RETURN
Power: OFF
Power on WIRE 3
Control: 10 .. 2 V



Subject to technical changes without notice. Rev. 00

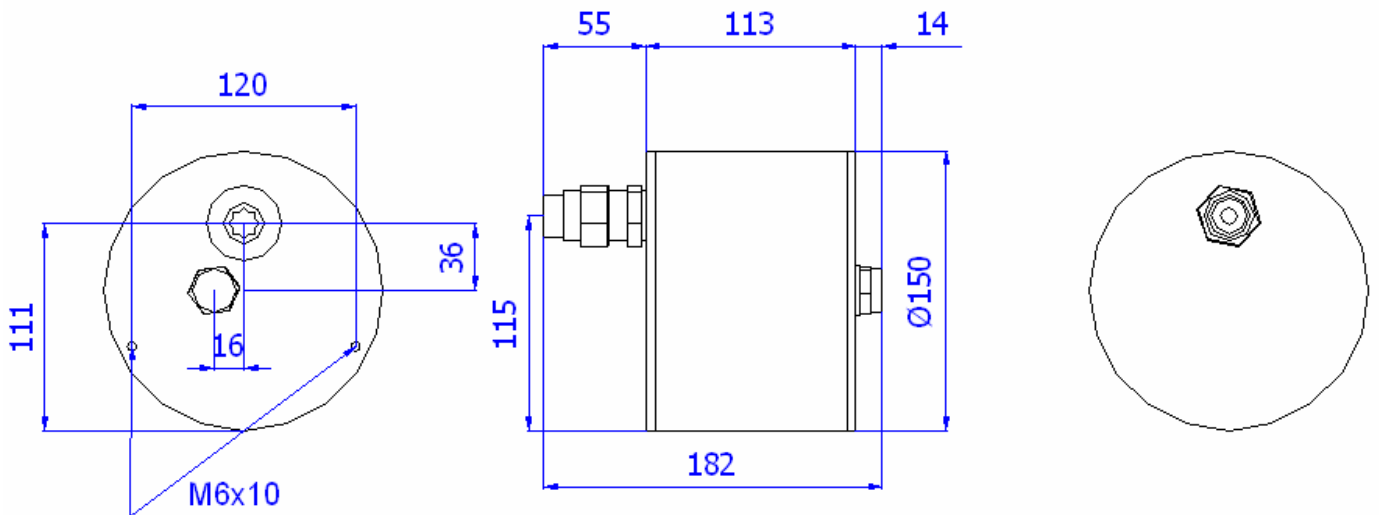
Dimensions and Mounting Instructions
EXAF - EXBF - EXBE - EXBG - EXSM - EXAM



*= Only series EXAF, EXBF, EXBG, EXBE

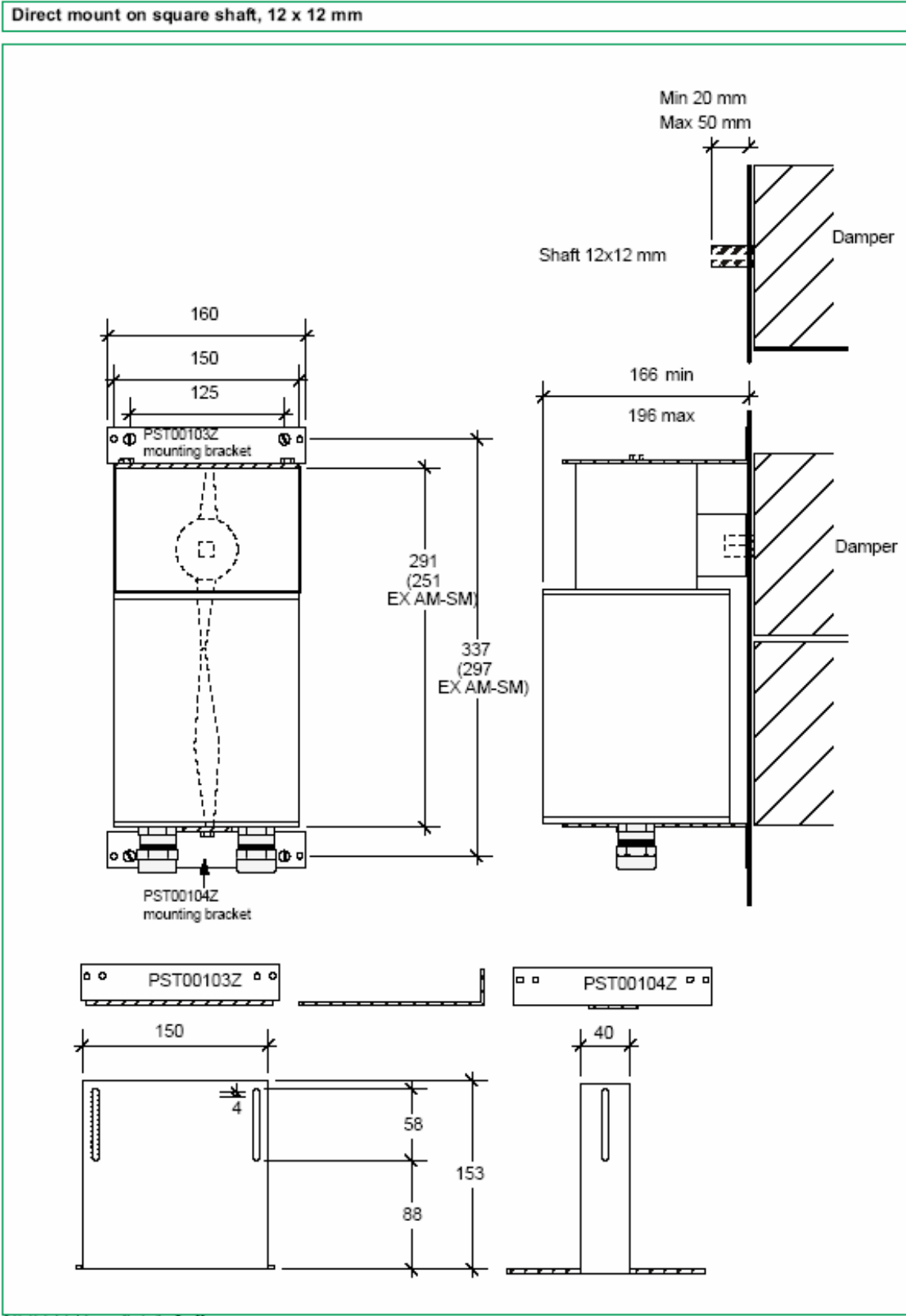
Note: Dimensions are specified in millimeters

EXNM

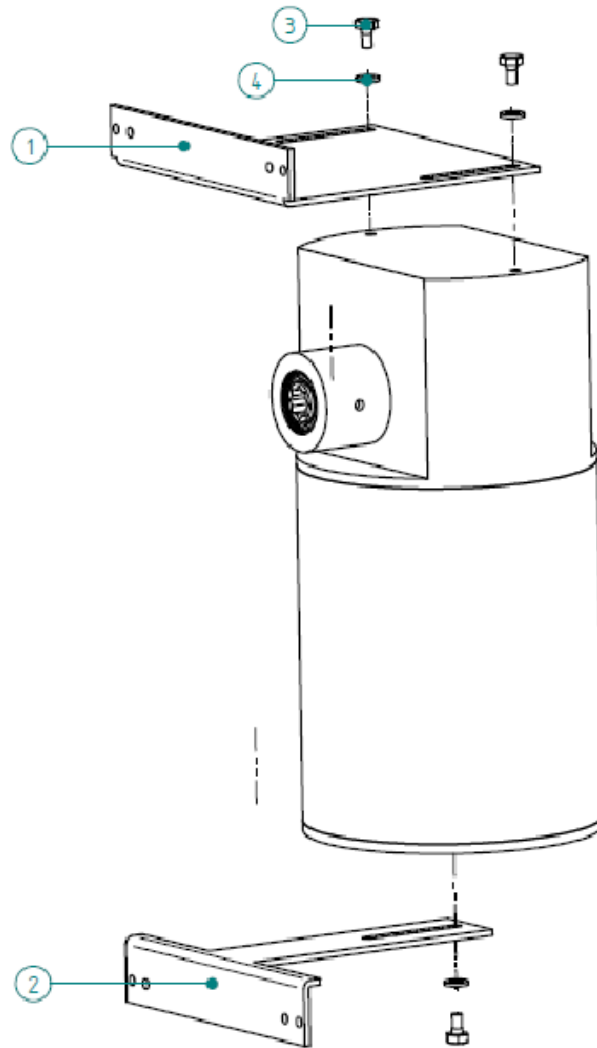


Note: Dimensions are specified in millimeters

Dimensions and Mounting Instructions
EXAF - EXBF - EXBE - EXBG - EXSM - EXAM



Dimensions and Mounting Instructions
EXAF - EXBF - EXBE - EXBG - EXSM - EXAM



| n* | Code description |
|----|------------------|
| 1 | PST00103Z |
| 2 | PST00104Z |
| 3 | TDE M6 x 10 |
| 4 | Flat washer |

Mount the bracket as shown in the picture above.

Threaded hole depth: 8mm. Do not replace standard screws with other one;
or ensure that screws does not penetrate more than 7mm into the enclosure.

Flat washer dimension : Di= 6,4mm De=12mm h=1,6mm