



- No spring return
- Running time 150 sec
- 40 Nm
- Control ON/OFF
- Power supply 230 Vac, 24Vac, 24Vdc
- According to EN 60079-0, EN60079-1, EN 60079-31
- Zones 1, 2, 21, 22

### Applications

The EXAM..GM actuators are intended for the operation of air control damper in ventilation and air condition systems.

### Features

Just powered, the actuator moves the damper to its start position, then it moves to the position set by the control signal. If the control signal is interrupted the motor locks the damper position.

The actuator is overload protected.

The actuator can be mounted directly on the damper shaft if square, 12 x 12 mm or 10 x 10 mm (adaptor included) Several mounting brackets are available for applications where the actuator cannot be directly coupled to the damper shaft. The cable glands are fit for cable diameters from 8 to 10,5 mm.



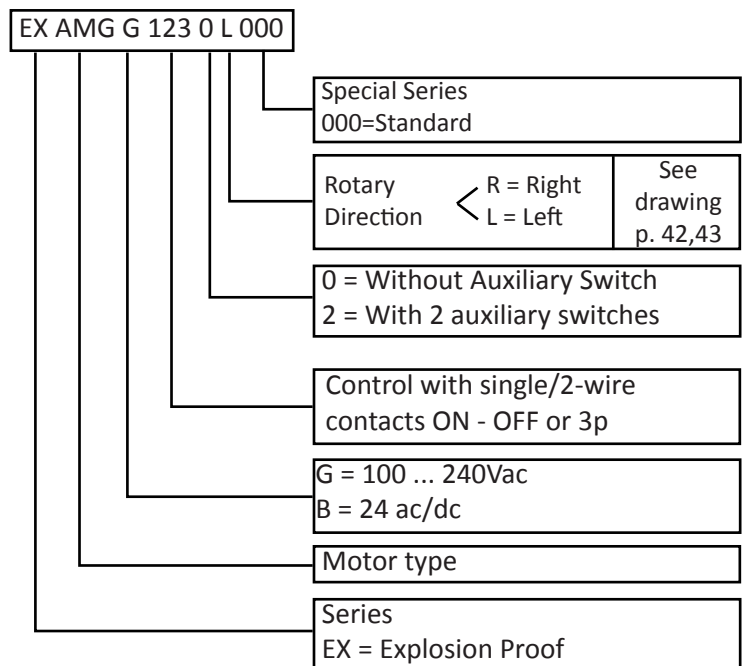
NEMKO 03 ATEX 1242X

- ⚠ II 2G Ex d IIC T6 Gb
  - ⚠ II 2D Ex tb IIIC T67 °C
- For zone 1, 2, 21, 22

The product may differ from the illustration

### Product range

ITEM	Auxiliary Switch
EXAM G G 123 0 L 000	None
EXAM G G 123 0 R 000	
EXAM G G 123 2 L 000	2 x SPDT
EXAM G G 123 2 R 000	
EXAM G B 123 0 L 000	None
EXAM G B 123 0 R 000	
EXAM G B 123 2 L 000	2 x SPDT
EXAM G B 123 2 R 000	



Options available on request:

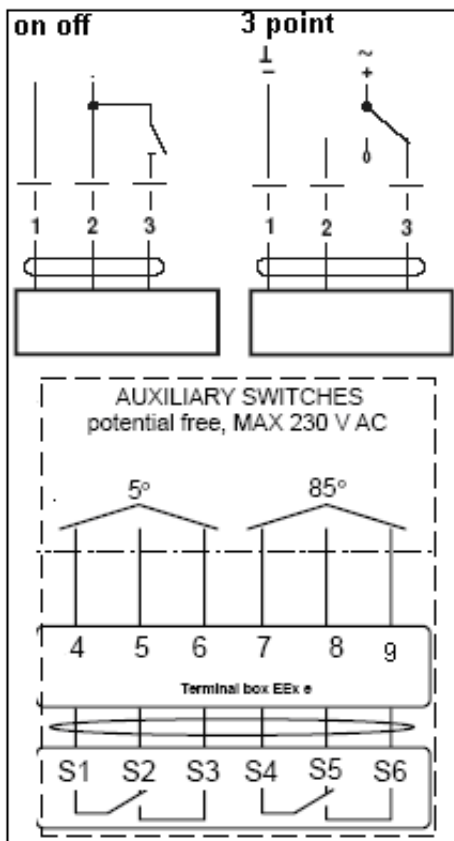
- Different angle of rotation
- Different wiring length

**Technical data**

Torque (nominal)	40 Nm (nominal voltage)
Control mode	ON/OFF, 1 or 2 wires
Rotation angle	95°
Running time	150 Sec.
Ambient temperature	-20°C + 50°C
Degree of protection	IP66
Housing material	Aluminium baked varnish
Maintenance	None
Fastening	Terminal block in Ex e box
Wiring length	1m cable
Weight	6 kg
Auxiliary switches	6A (3A) max 250V
	switching point 5° e 85°
EMC	CE according to 2004/108/EC
Low voltage directive	CE according to 2006/95/EEC
Halogen – Free wiring	According to IEC 60332-1/3 and According to IEC 60754-1/2

EXAM G type	
Power supply	AC 100 ... 240V 50/60 Hz
Nominal voltage range	AC 85 ... 265V
Power consumption: running	5.0 W
At rest	2.0 W
For wire sizing	9.0 VA

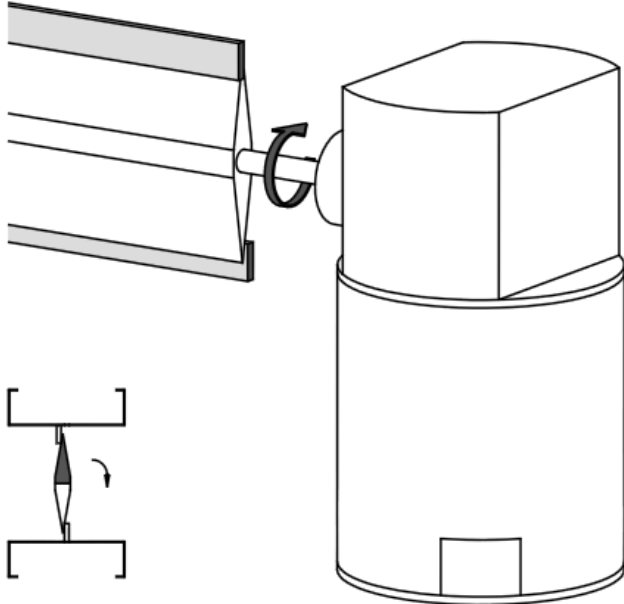
EXAM G type	
Power supply	AC 100 ... 240V 50/60 Hz
Nominal voltage range	AC 85 ... 265V
Power consumption: running	5.0 W
At rest	2.0 W
For wire sizing	9.0 VA

**Electric diagram**

**NOTE:**

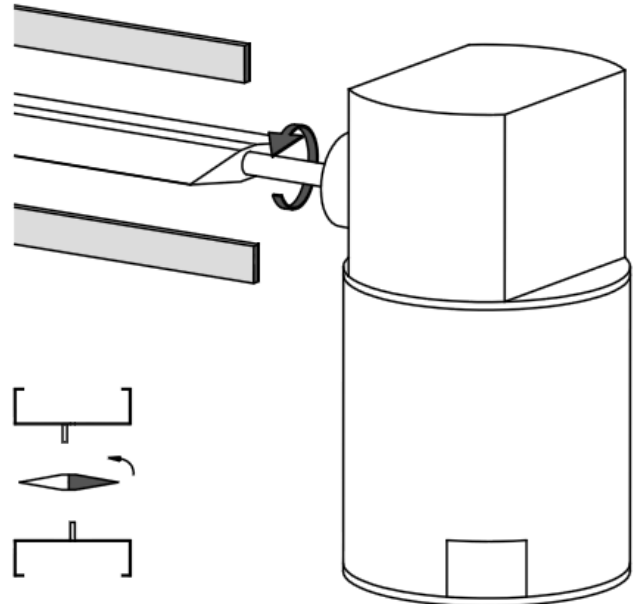
- Read the note about the use and torque requirements of the damper manufacturer
- All electrical wirings must be according to local standards.
- Electrical connections by power off only.
- Ex e junction box must not be opened under any circumstances when the power is on.
- Actuator cable must be installed in a fixed position and protected against damage.
- Avoid excessive vibrations.
- Before switching-on, check that no other equipment is damaged and make sure that supply voltage corresponds with the Actuator's specification.
- Before switching-off check for possible effects on other equipments.
- The Actuator cannot and is not to be opened to guarantee explosion proof and warranty.
- For any problem contact Automatikproduktur.
- The equipment shall be marked "X" since flameproof joint is other than the relevant minimum or maximum according to CEI EN 60079-1. Information on dimension of flameproof joints available at Automatikproduktur.

**Rotary Direction "R". For Damper normally closed N.C.**

MOTOR  
Power: ON  
Power on WIRE 2  
Control: 2 .. 10 V

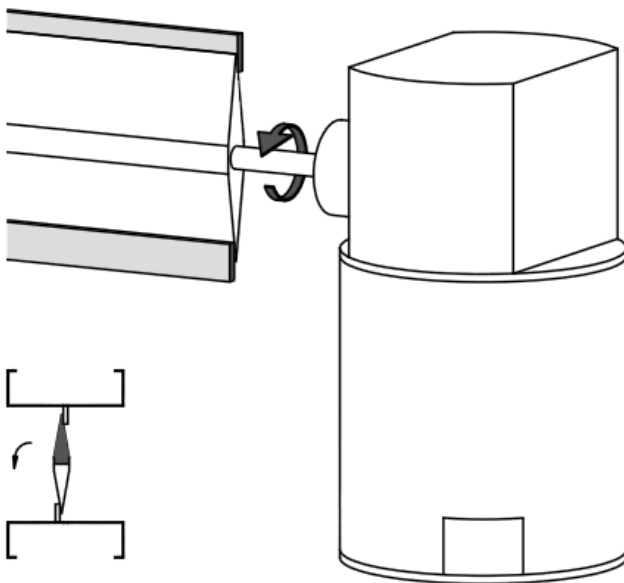


MOTOR or SPRING RETURN  
Power: OFF  
Power on WIRE 3  
Control: 10 .. 2 V

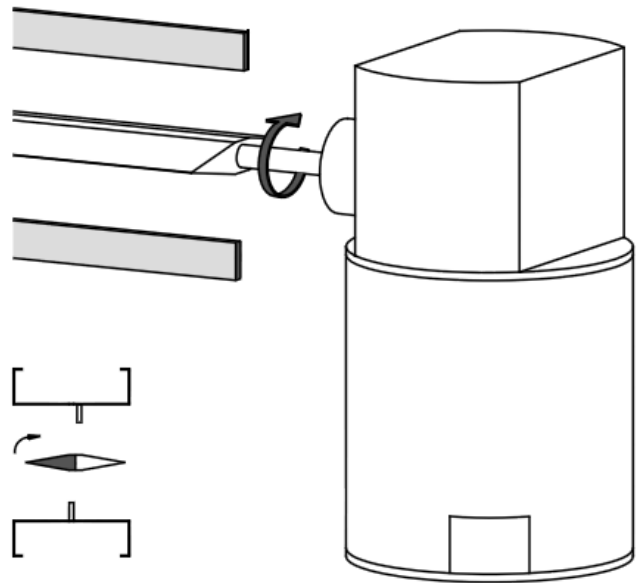


**Rotary Direction "L". For Damper normally closed N.C.**

MOTOR  
Power: ON  
Power on WIRE 2  
Control: 2 .. 10 V



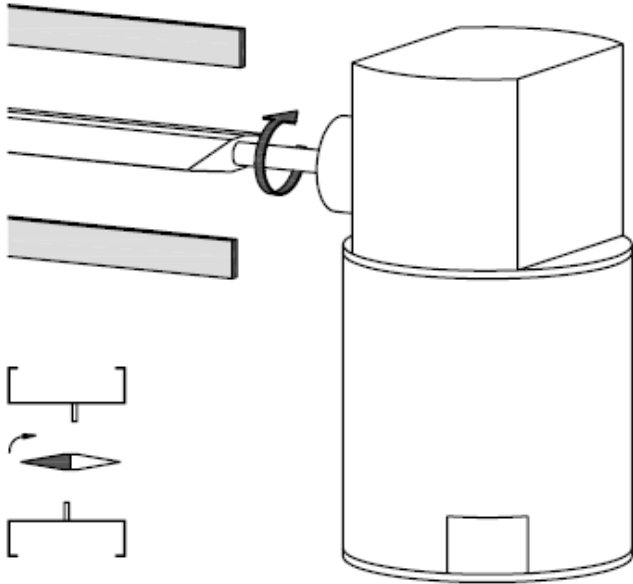
MOTOR or SPRING RETURN  
Power: OFF  
Power on WIRE 3  
Control: 10 .. 2 V



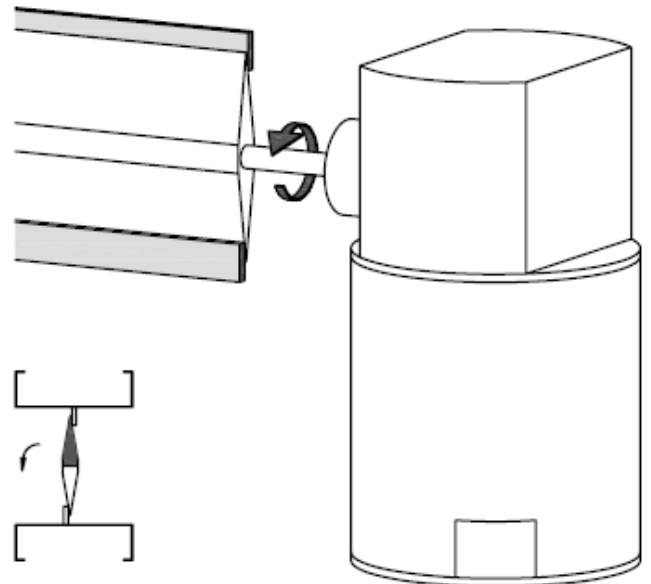
Subject to technical changes without notice. Rev. 00

**Rotary Direction "R". For Damper normally open N.O.**

MOTOR  
Power: ON  
Power on WIRE 2  
Control: 2 .. 10 V

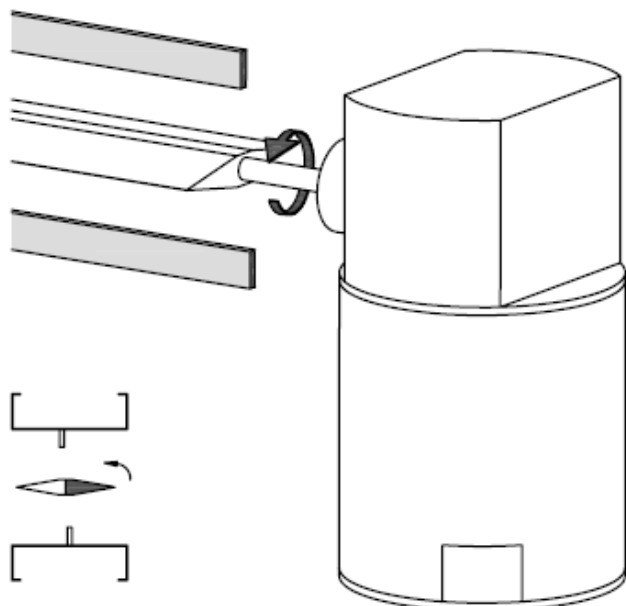


MOTOR or SPRING RETURN  
Power: OFF  
Power on WIRE 3  
Control: 10 .. 2 V

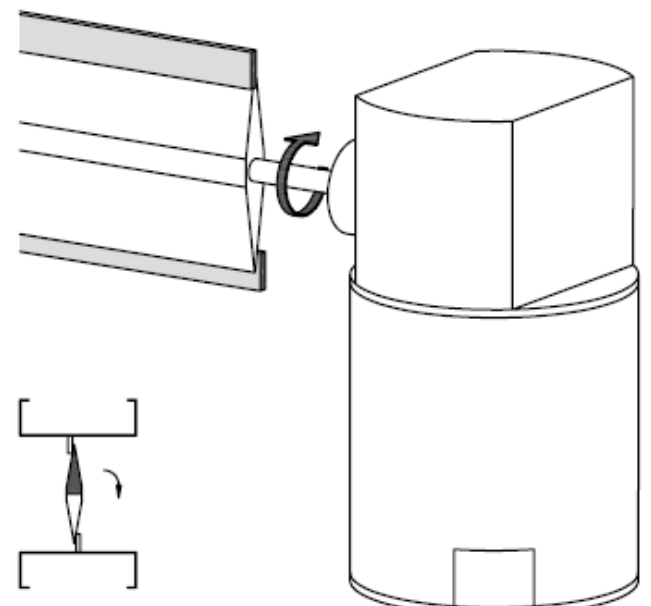


**Rotary Direction "L". For Damper normally closed N.O.**

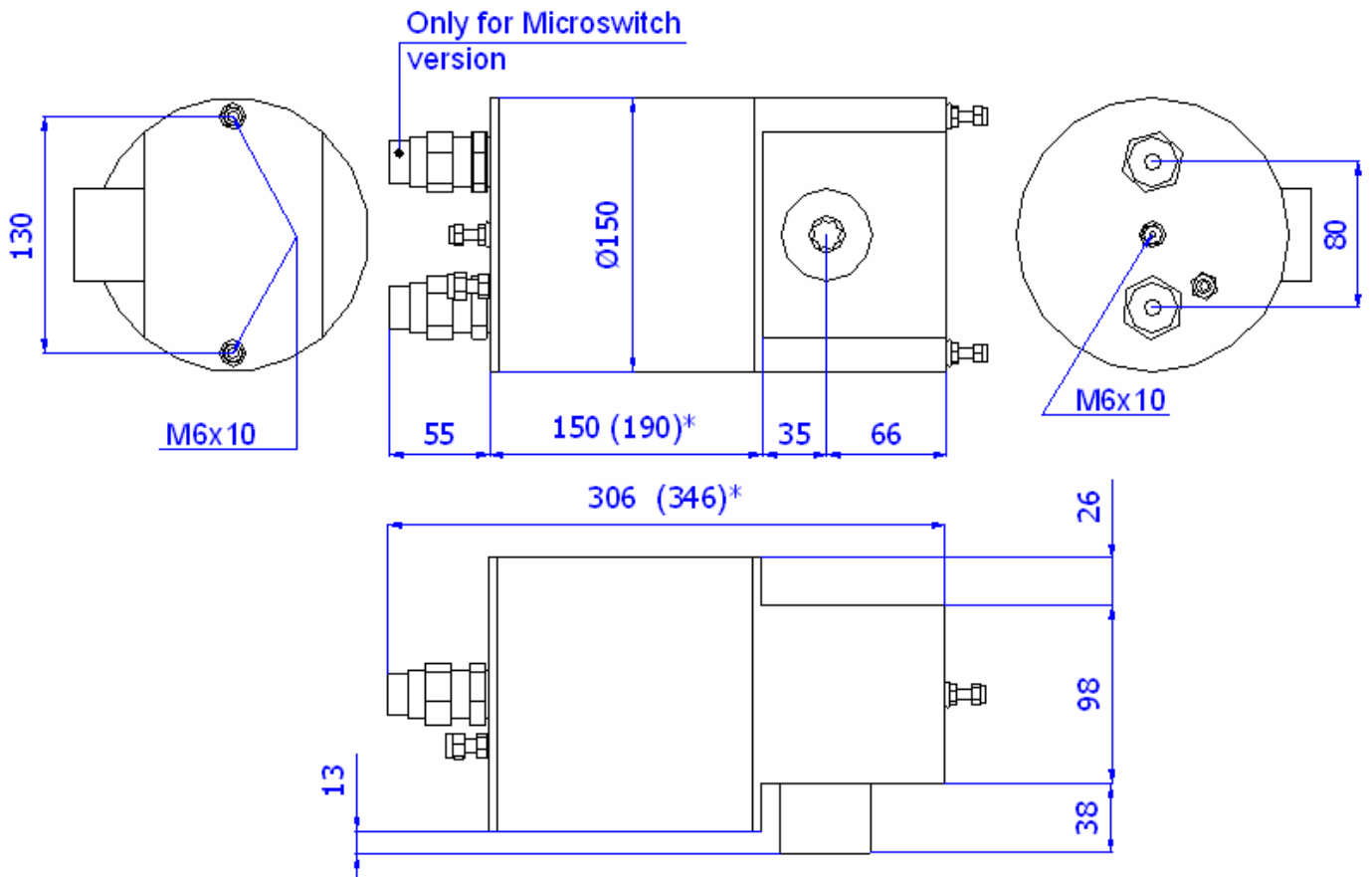
MOTOR  
Power: ON  
Power on WIRE 2  
Control: 2 .. 10 V



MOTOR or SPRING RETURN  
Power: OFF  
Power on WIRE 3  
Control: 10 .. 2 V



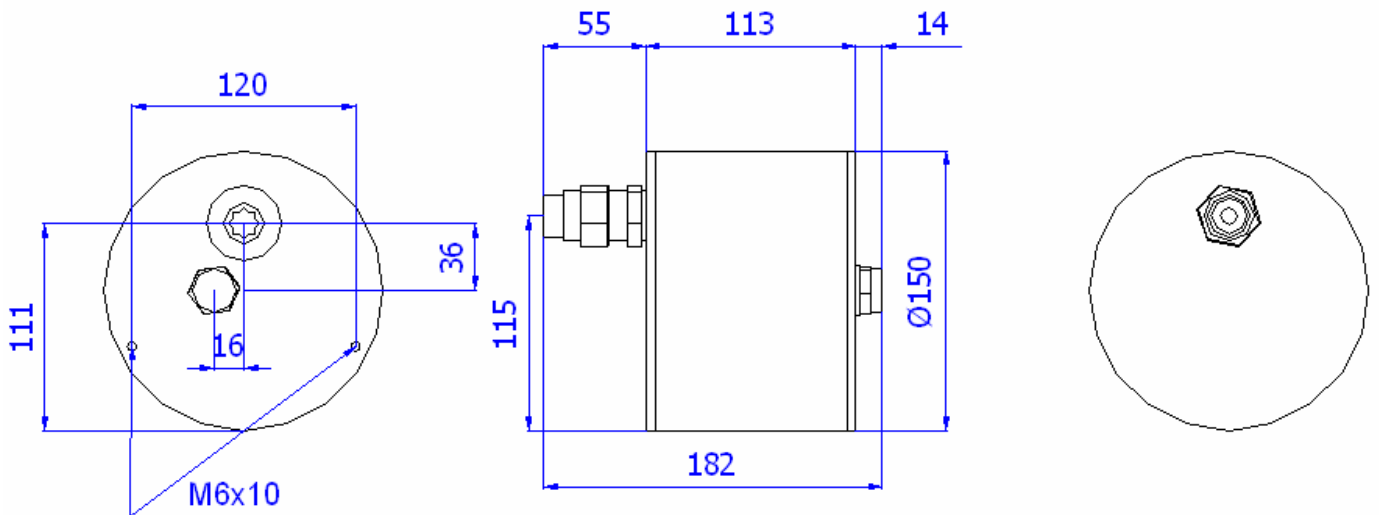
Dimensions and Mounting Instructions  
EXAF - EXBF - EXBE - EXBG - EXSM - EXAM



\*= Only series EXAF, EXBF, EXBG, EXBE

Note: Dimensions are specified in millimeters

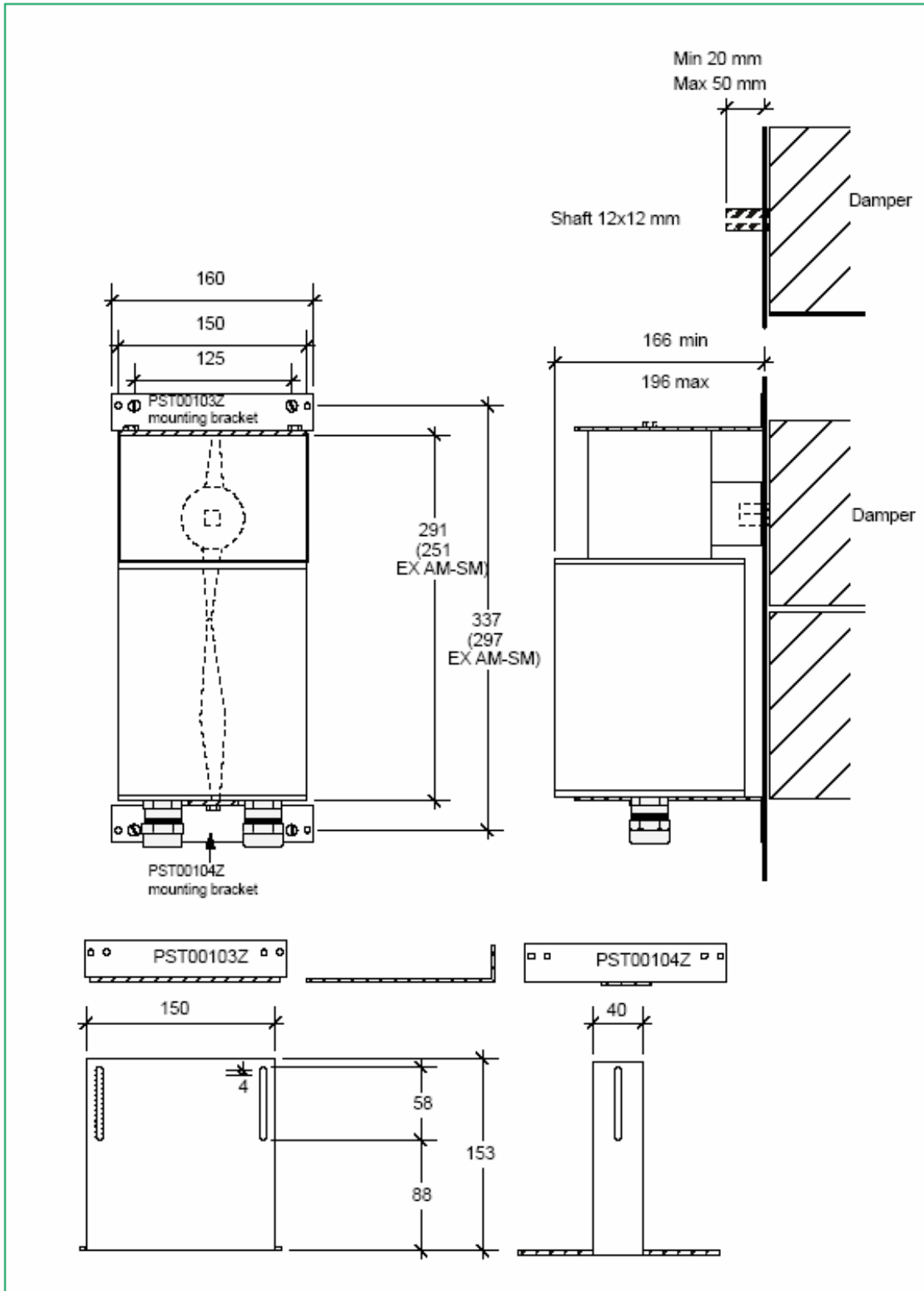
EXNM



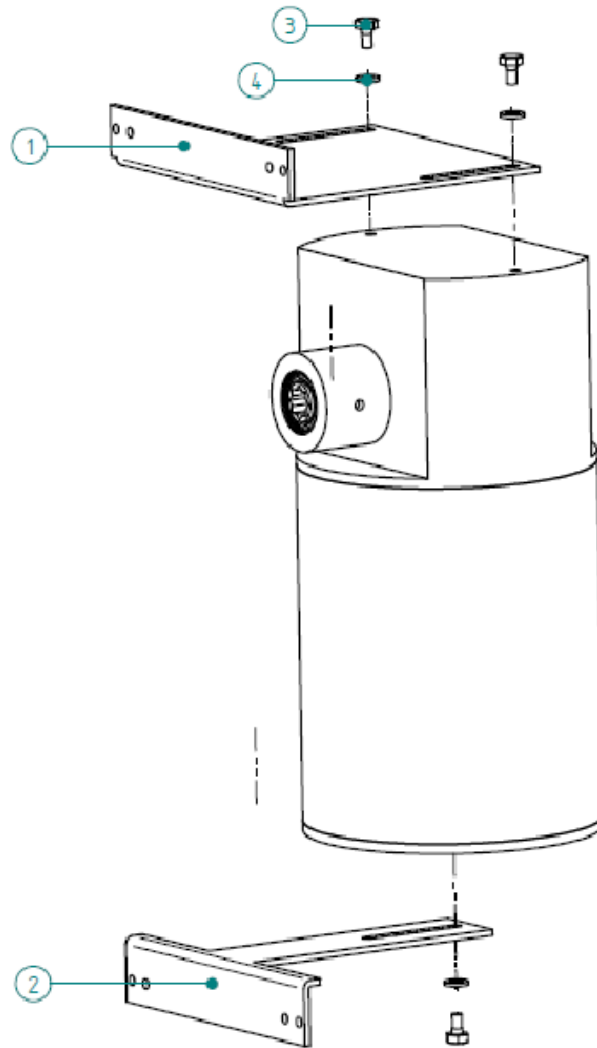
Note: Dimensions are specified in millimeters

Dimensions and Mounting Instructions  
EXAF - EXBF - EXBE - EXBG - EXSM - EXAM

Direct mount on square shaft, 12 x 12 mm



Dimensions and Mounting Instructions  
EXAF - EXBF - EXBE - EXBG - EXSM - EXAM



n*	Code description
1	PST00103Z
2	PST00104Z
3	TDE M6 x 10
4	Flat washer

Mount the bracket as shown in the picture above.

Threaded hole depth: 8mm. Do not replace standard screws with other one;  
or ensure that screws does not penetrate more than 7mm into the enclosure.

Flat washer dimension : Di= 6,4mm De=12mm h=1,6mm