



- Spring return torque: 8.5 Nm
- Motor torque: 11 Nm
- Spring return running time ± 20 sec
- Rotation 180°
- Power supply 230V ac, 24V ac, 24V dc
- According to EN 60079-0, EN60079-1, EN 60079-31
- Zones 1, 2, 21, 22

Applications

The EXBG spring return actuators are intended for the operation of fire and smoke dampers in ventilation and airconditioning systems.

Features

The actuator moves the damper to its working position while tensioning the spring return until it is powered. If the power supply is interrupted the spring moves the damper back to its safe position. The actuator is overload protected.

The actuator can be mounted directly on the damper shaft if square, 12 x 12 mm or 10 x 10 mm (adaptor included); Several mounting brackets are available for applications where the actuator cannot be directly coupled to the damper shaft. The cable glands are fit for cable diameters from 8 to 10,5 mm.



CE
0948

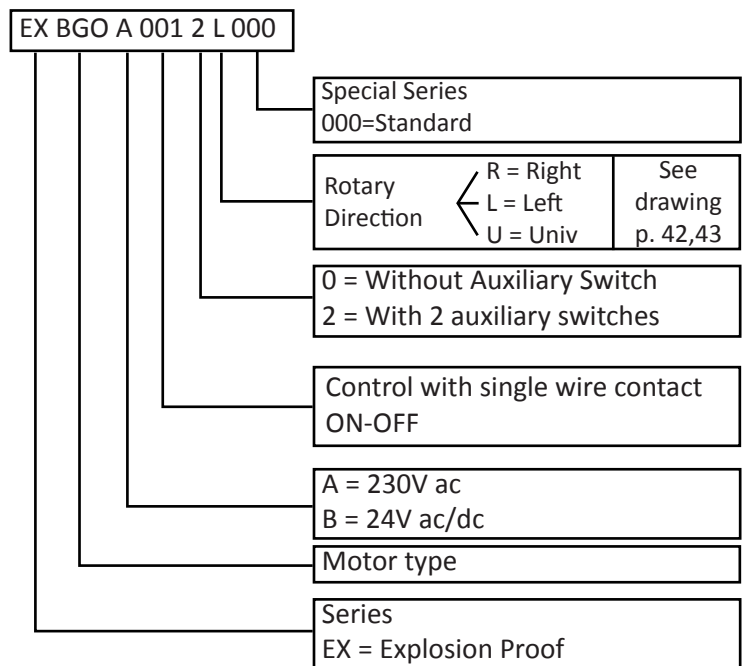
NEMKO 03 ATEX 1242X

- Ex II 2G Ex d IIC T6 Gb
 - Ex II 2D Ex tb IIIC T67 °C
- For zone 1, 2, 21, 22

The product may differ from the illustration

Product range

ITEM	Auxiliary Switch
EXBG 0 A 001 2 L 000	2 x SPDT
EXBG 0 A 001 2 R 000	
EXBG 0 A 001 2 U 000	
EXBG 0 B 001 2 L 000	
EXBG 0 B 001 2 R 000	
EXBG 0 B 001 2 U 000	



Options available on request:

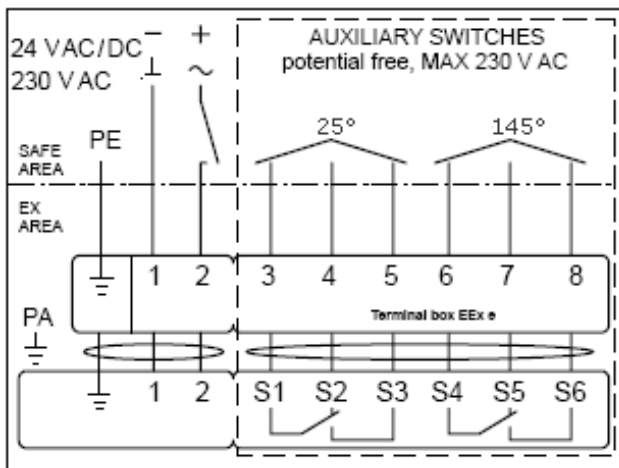
- Different angle of rotation
- Different wiring length

Technical data

Torque	motor at rest	11 Nm 8.5 Nm
Rotation angle		180°
Running time		140 Sec.
Running time spring return		< 20 sec
Ambient temperature		-20°C + 50°C
Degree of protection		IP66
Housing material		Aluminium baked varnish
Maintenance		None
Fastening		Terminal block in Ex e box
Wiring length		1m cable
Weight		8.5 Kg
Auxiliary switches		6A (3A) max 250V ac Switching point 25° e 140°
EMC		CE according to 2004/108/EC
Low voltage directive		CE according to 2006/95/EEC
Halogen – Free wiring		According to IEC 60332-1/3 and According to IEC 60754-1/2

EXBG A Version	
Power supply	100 . . 240 Vac ± 15% 50/60 Hz
Power consump.: running	8.0 W
Power consump.: At rest	3.0 W
Sizing	12.5 VA

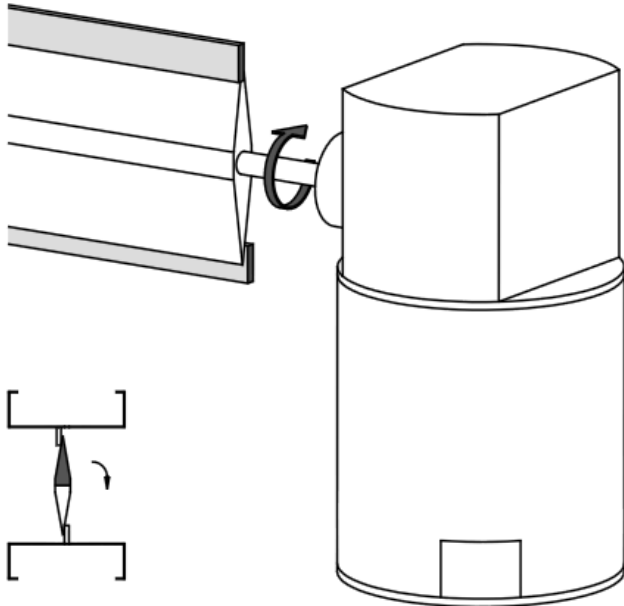
EXBG B Version	
Power supply	24 Vac ± 20% 50/60 Hz 24 Vdc ± 20%
Power consump.: running	7.0 W
Power consump.: At rest	2.0 W
Sizing	10 VA

Electrical diagram

NOTE:

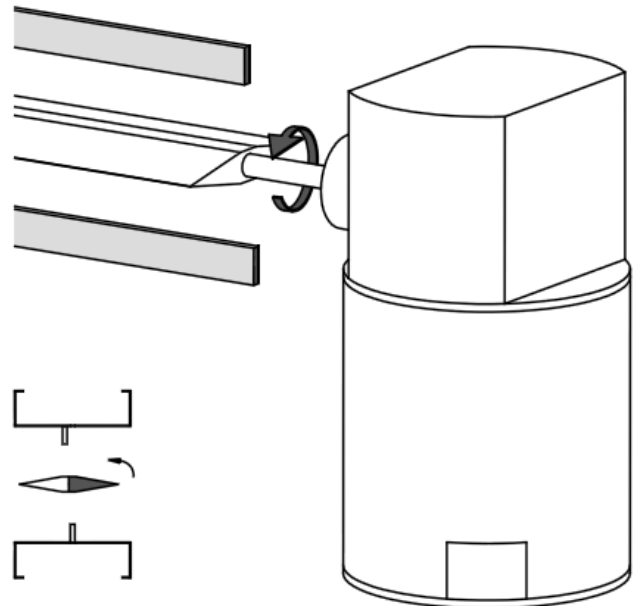
- Read the note about the use and torque requirements of the damper manufacturer
- All electrical wirings must be according to local standards.
- Electrical connections by power off only.
- Ex e junction box must not be opened under any circumstances when the power is on.
- Actuator cable must be installed in a fixed position and protected against damage.
- Avoid excessive vibrations.
- Before switching-on, check that no other equipment is damaged and make sure that supply voltage corresponds with the Actuator's specification.
- Before switching-off check for possible effects on other equipments.
- The Actuator cannot and is not to be opened to guarantee explosion proof and warranty.
- For any problem contact Automatikproduktur.
- The equipment shall be marked "X" since flameproof joint is other than the relevant minimum or maximum according to CEI EN 60079-1. Information on dimension of flameproof joints available at Automatikproduktur.

Rotary Direction "R". For Damper normally closed N.C.

MOTOR
Power: ON
Power on WIRE 2
Control: 2 .. 10 V

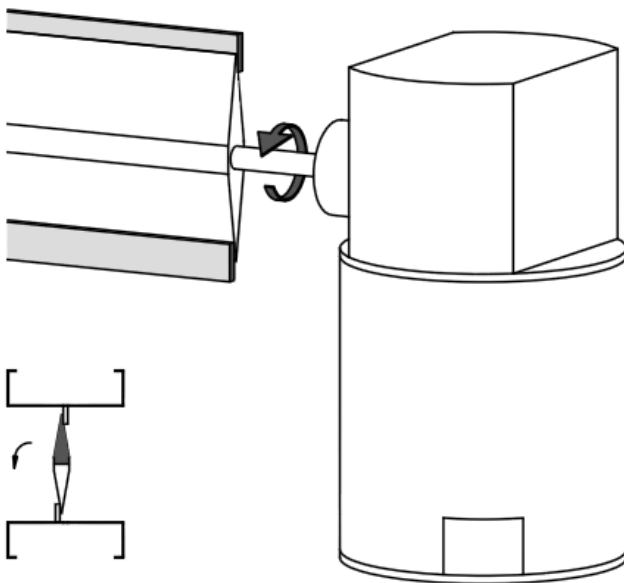


MOTOR or SPRING RETURN
Power: OFF
Power on WIRE 3
Control: 10 .. 2 V

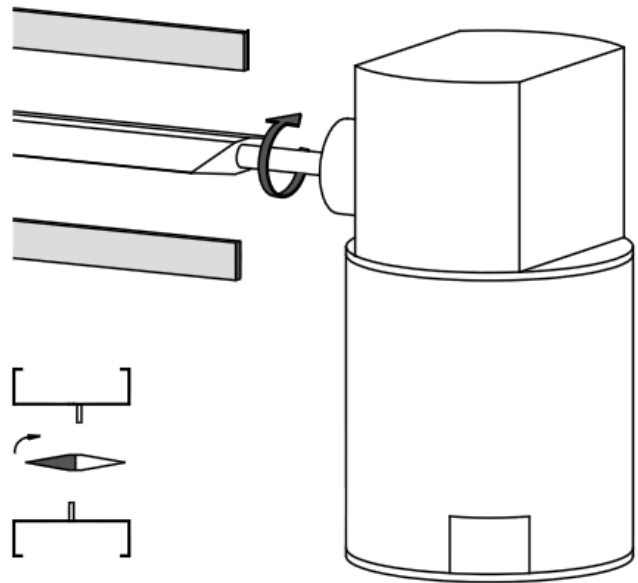


Rotary Direction "L". For Damper normally closed N.C.

MOTOR
Power: ON
Power on WIRE 2
Control: 2 .. 10 V



MOTOR or SPRING RETURN
Power: OFF
Power on WIRE 3
Control: 10 .. 2 V

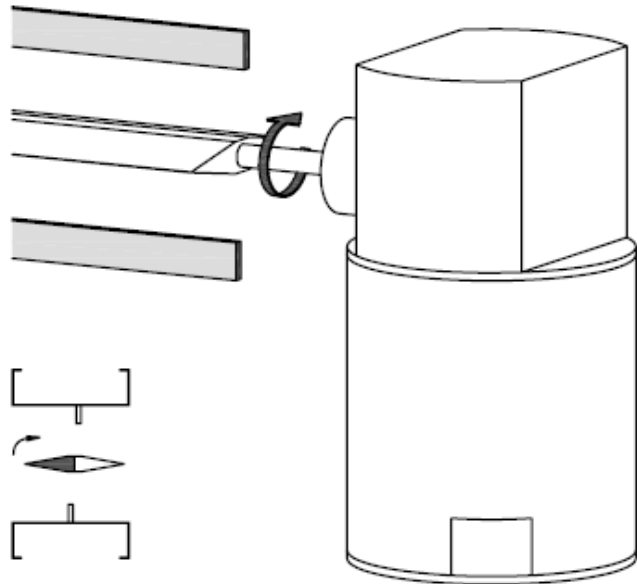


Subject to technical changes without notice. Rev. 00

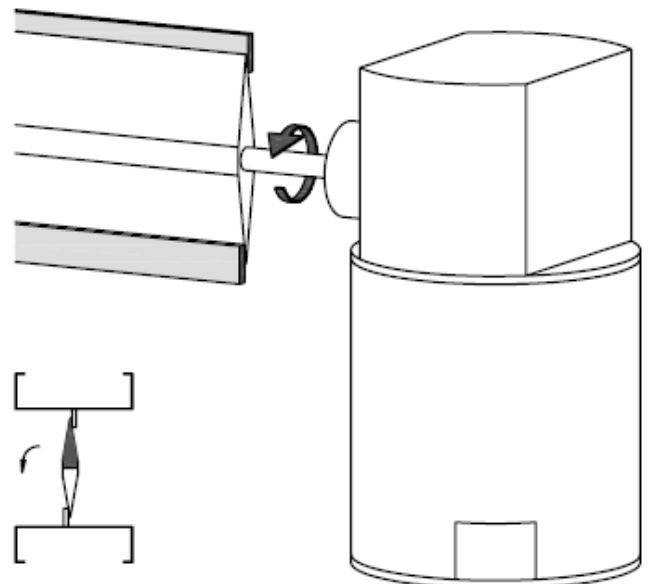


Rotary Direction "R". For Damper normally open N.O.

MOTOR
Power: ON
Power on WIRE 2
Control: 2 .. 10 V

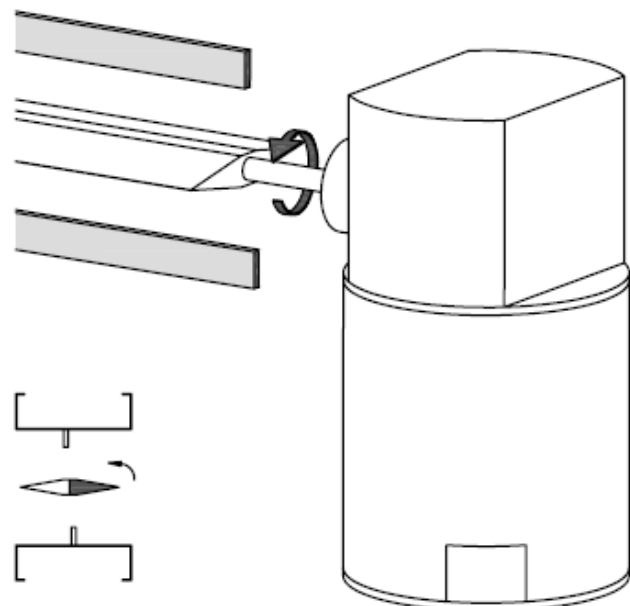


MOTOR or SPRING RETURN
Power: OFF
Power on WIRE 3
Control: 10 .. 2 V

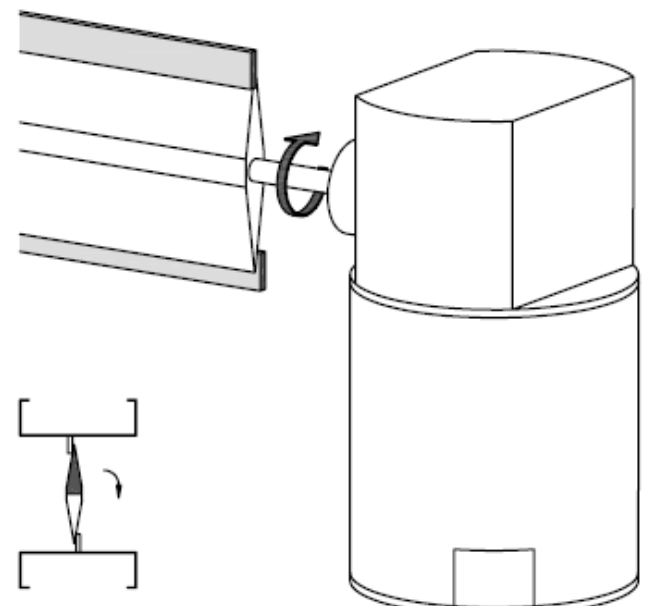


Rotary Direction "L". For Damper normally closed N.O.

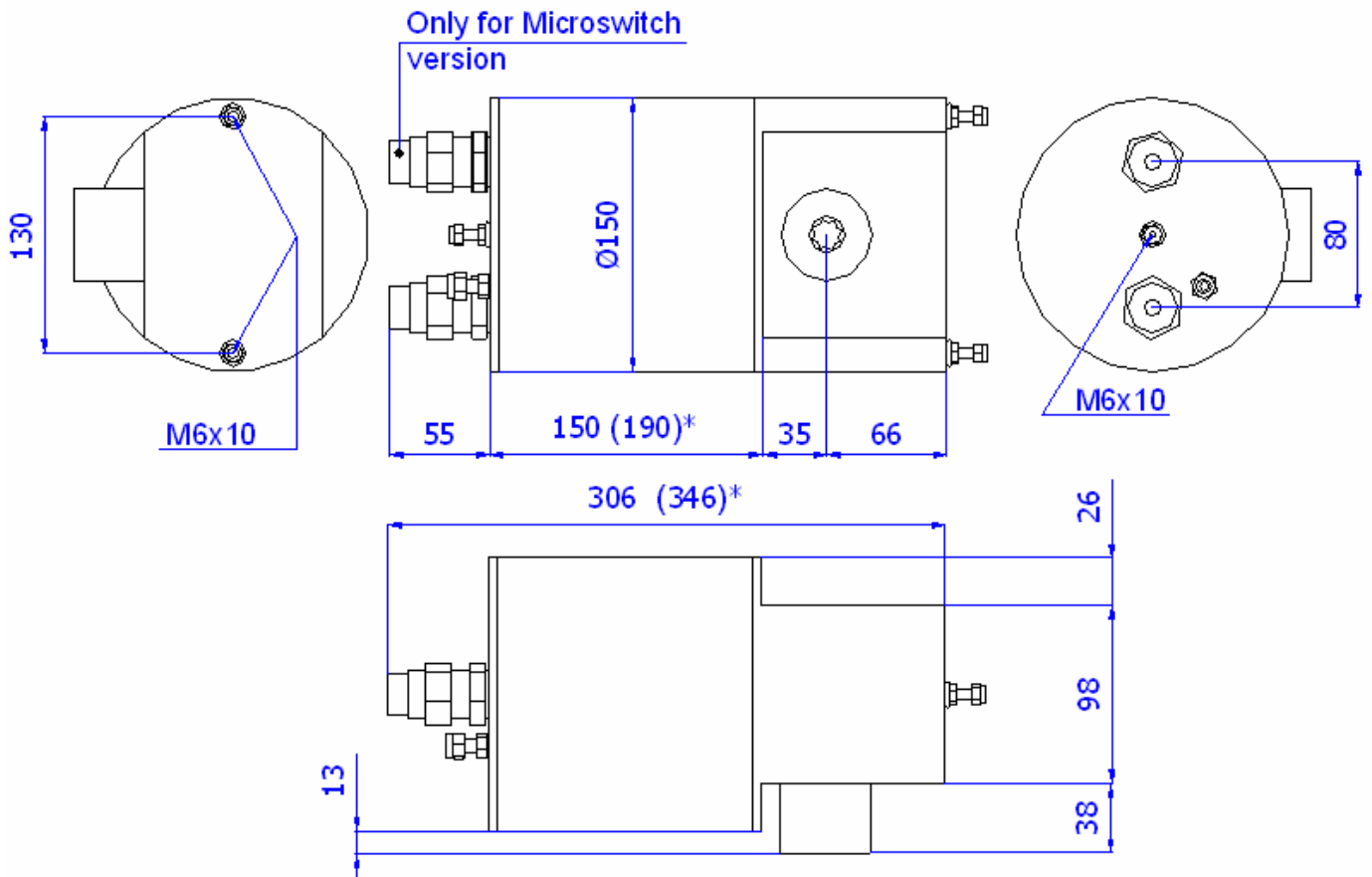
MOTOR
Power: ON
Power on WIRE 2
Control: 2 .. 10 V



MOTOR or SPRING RETURN
Power: OFF
Power on WIRE 3
Control: 10 .. 2 V



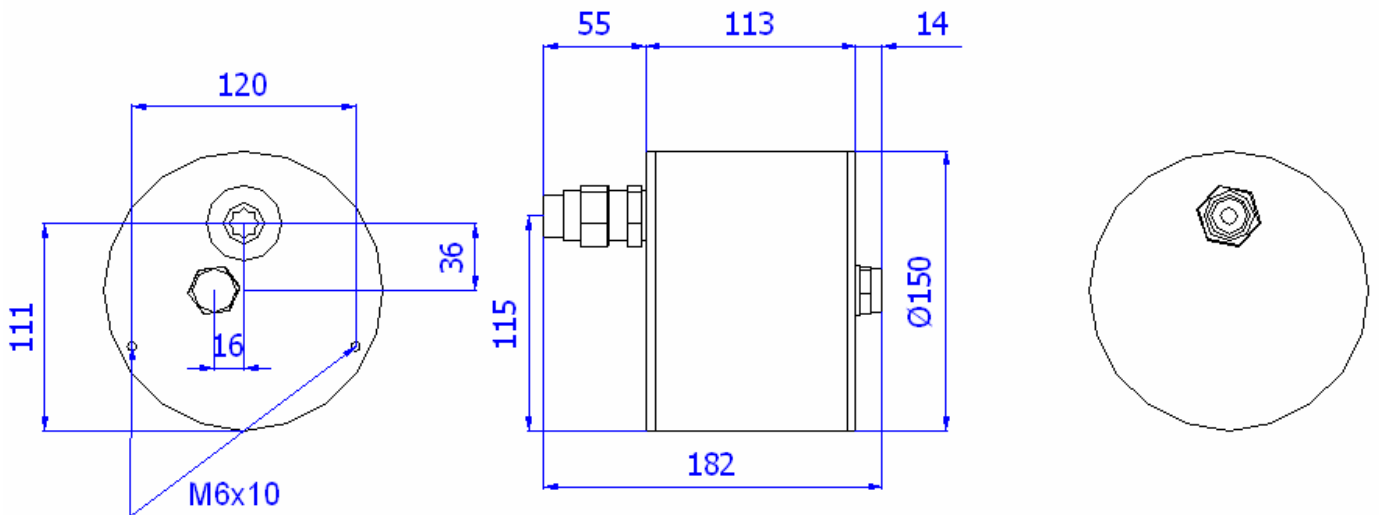
Dimensions and Mounting Instructions
EXAF - EXBF - EXBE - EXBG - EXSM - EXAM



*= Only series EXAF, EXBF, EXBG, EXBE

Note: Dimensions are specified in millimeters

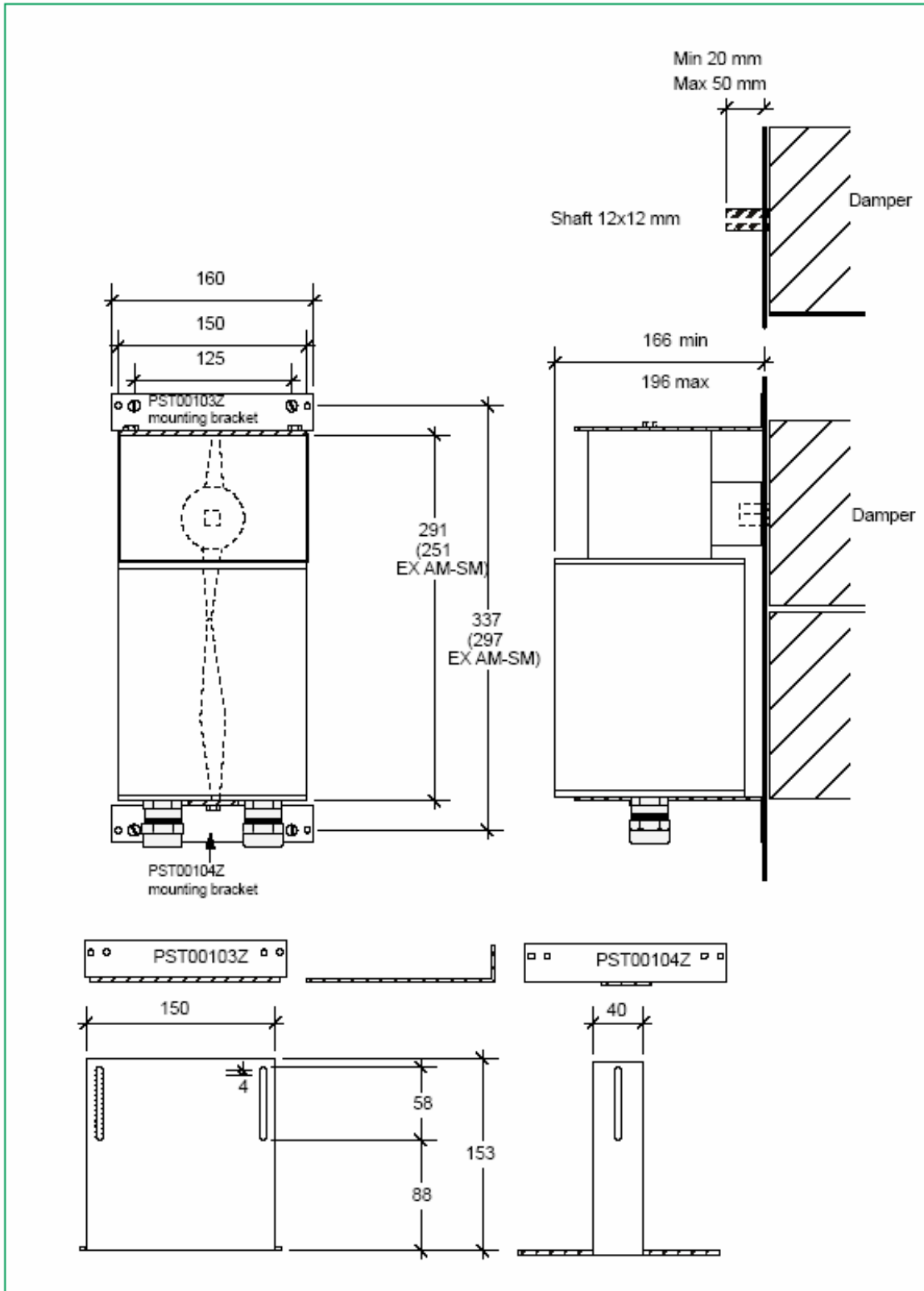
EXNM



Note: Dimensions are specified in millimeters

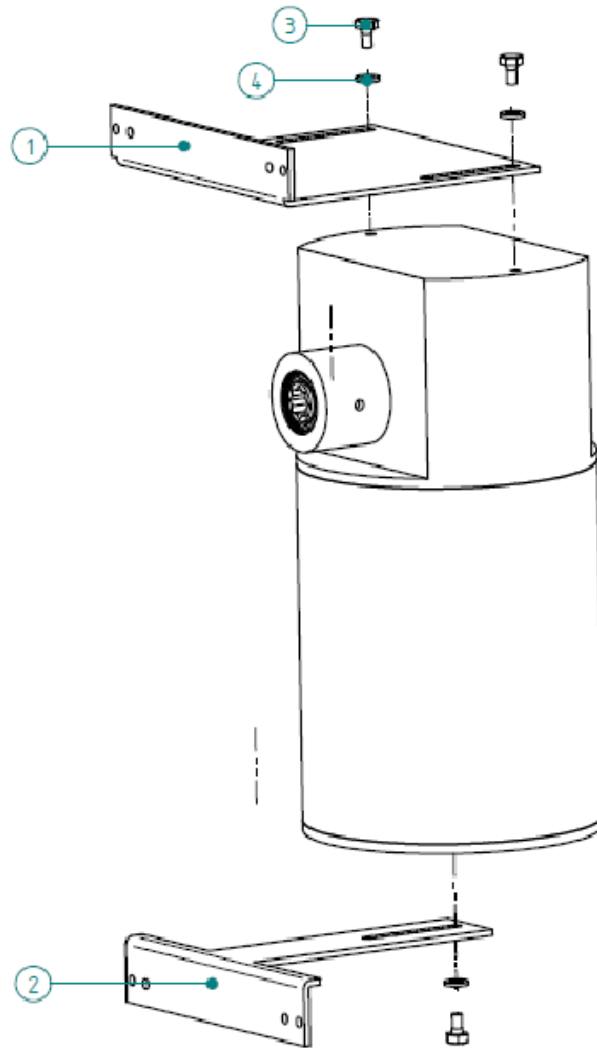
Dimensions and Mounting Instructions
EXAF - EXBF - EXBE - EXBG - EXSM - EXAM

Direct mount on square shaft, 12 x 12 mm



Subject to technical changes without notice. Rev: 00

Dimensions and Mounting Instructions
EXAF - EXBF - EXBE - EXBG - EXSM - EXAM



n*	Code description
1	PST00103Z
2	PST00104Z
3	TDE M6 x 10
4	Flat washer

Mount the bracket as shown in the picture above.

Threaded hole depth: 8mm. Do not replace standard screws with other one;
or ensure that screws does not penetrate more than 7mm into the enclosure.

Flat washer dimension : Di= 6,4mm De=12mm h=1,6mm