



- No spring return
- Running time 150 sec
- 20 Nm
- Control ON/OFF, 3-point
- Power supply 230V ac, 24V ac, 24V dc
- According to EN 60079-0, EN60079-1, EN 60079-31
- Zones 1, 2, 21, 22

Applications

The EXSM actuators are intended for the operation of air control damper in ventilation and air condition system up to approx 4m².

Features

The actuator moves the damper to its working position until it is powered. If the power supply is interrupted the motor locks the damper position.

The actuator is overload protected. The actuator can be mounted directly on the damper shaft if square, 12 x 12 mm or 10 x 10 mm (adaptor included)

Several mounting brackets are available for applications where the actuator cannot be directly coupled to the damper shaft.

Product range

ITEM	Auxiliary Switch
EXSM 0 G 123 0 L 000	None
EXSM 0 G 123 0 R 000	
EXSM 0 G 123 2 L 000	2 x SPDT
EXSM 0 G 123 2 R 000	
EXSM 0 B 123 0 L 000	None
EXSM 0 B 123 0 R 000	
EXSM 0 B 123 2 L 000	2 x SPDT
EXSM 0 B 123 2 R 000	

Options available on request:

- Different angle of rotation
- Different wiring length



CE
0948

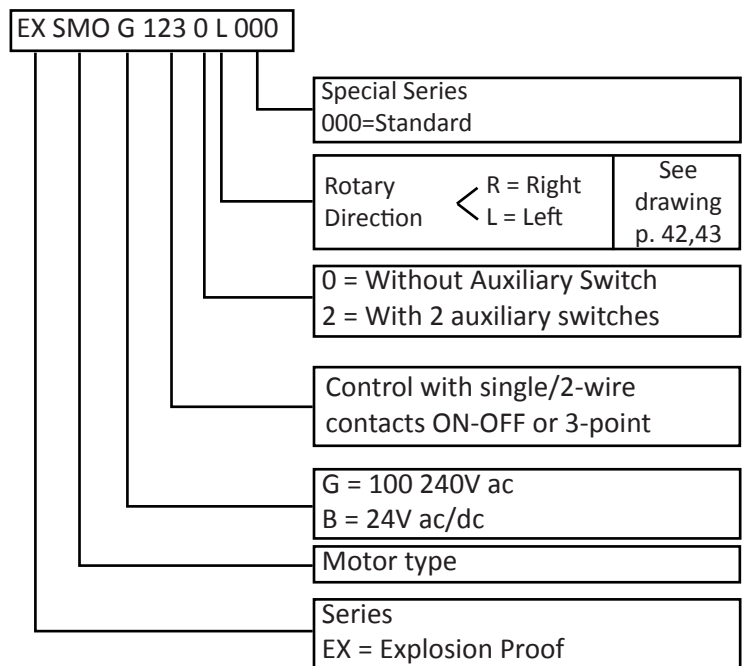
NEMKO 03 ATEX 1242X

II 2G Ex d IIC T6 Gb

II 2D Ex tb IIIC T67 °C

For zone 1, 2, 21, 22

The product may differ from the illustration

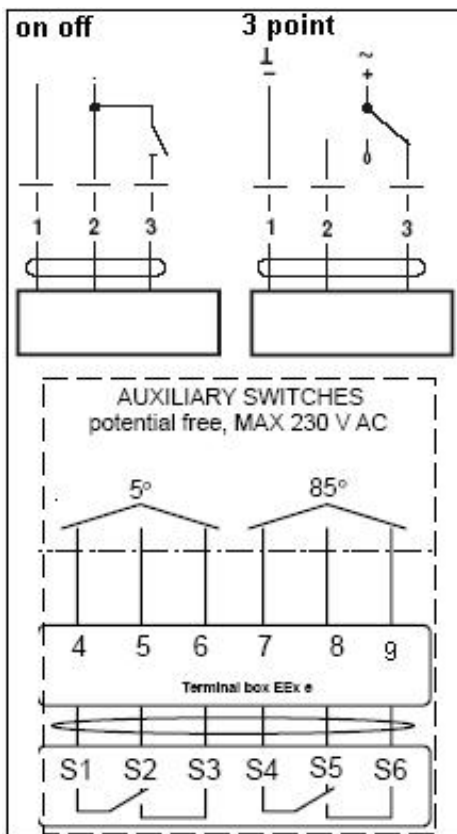


Technical data

Torque	20 Nm
Control Mode	ON/OFF, 3-ppoint
Angle of rotation	95°
Running time	150 Sec.
Ambient temperature	-20°C + 50°C
Degree of protection	IP66
Housing material	Aluminium baked varnish
Maintenance	None
Fastening	Terminal block in Ex e box
Wiring length	1m cable
Weight	5.5 Kg
Auxiliary switches	3A (0,5A) max 250V ac Switching point 5° e 85°
EMC	CE according to 2004/108/EC
Low voltage directive	CE according to 2006/95/EEC
Halogen – Free wiring	According to IEC 60332-1/3 and According to IEC 60754-1/2

EXSM G Version	
Power supply	100 . . 240 Vac ± 15% 50/60 Hz
Power consump.: running	2.5 W
Power consump.: At rest	0.6 W
Sizing	6.0 VA

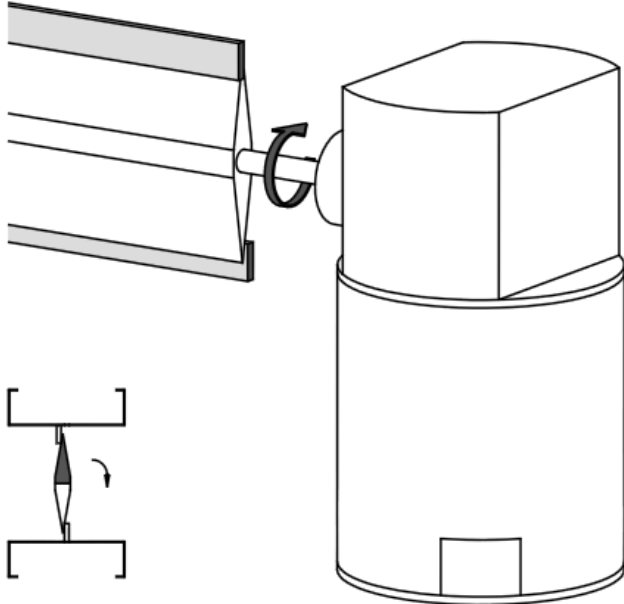
EXSM B Version	
Power supply	24 Vac ± 20% 50/60 Hz 24 Vdc ± 20%
Power consump.: running	2.0 W
Power consump.: At rest	0.2 W
Sizing	4.0 VA

Electrical diagram

NOTE:

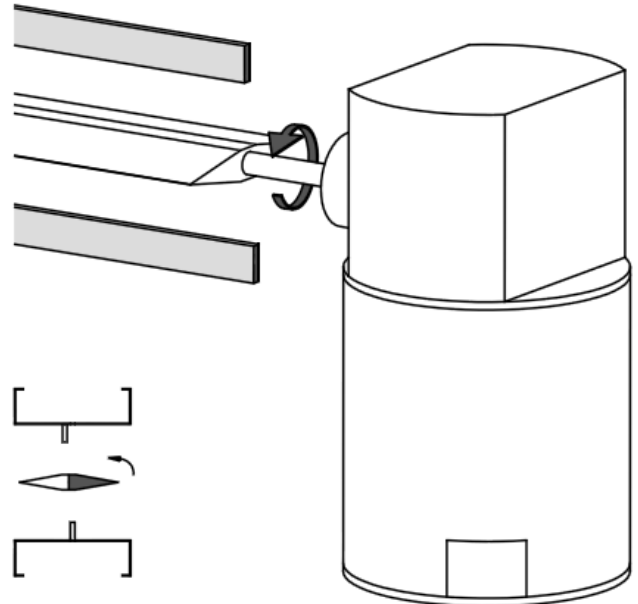
- Read the note about the use and torque requirements of the damper manufacturer
- All electrical wirings must be according to local standards.
- Electrical connections by power off only.
- Ex e junction box must not be opened under any circumstances when the power is on.
- Actuator cable must be installed in a fixed position and protected against damage.
- Avoid excessive vibrations.
- Before switching-on, check that no other equipment is damaged and make sure that supply voltage corresponds with the Actuator's specification.
- Before switching-off check for possible effects on other equipments.
- The Actuator cannot and is not to be opened to guarantee explosion proof and warranty.
- For any problem contact Automatikproduktur.
- The equipment shall be marked "X" since flameproof joint is other than the relevant minimum or maximum according to CEI EN 60079-1. Information on dimension of flameproof joints available at Automatikproduktur.

Rotary Direction "R". For Damper normally closed N.C.

MOTOR
Power: ON
Power on WIRE 2
Control: 2 .. 10 V

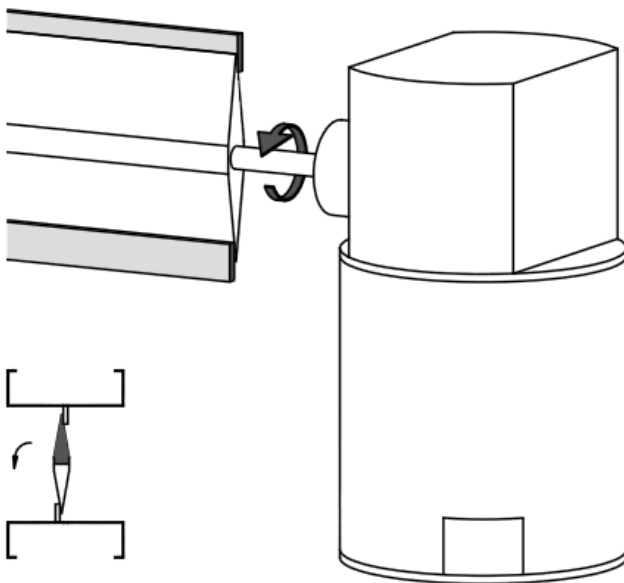


MOTOR or SPRING RETURN
Power: OFF
Power on WIRE 3
Control: 10 .. 2 V

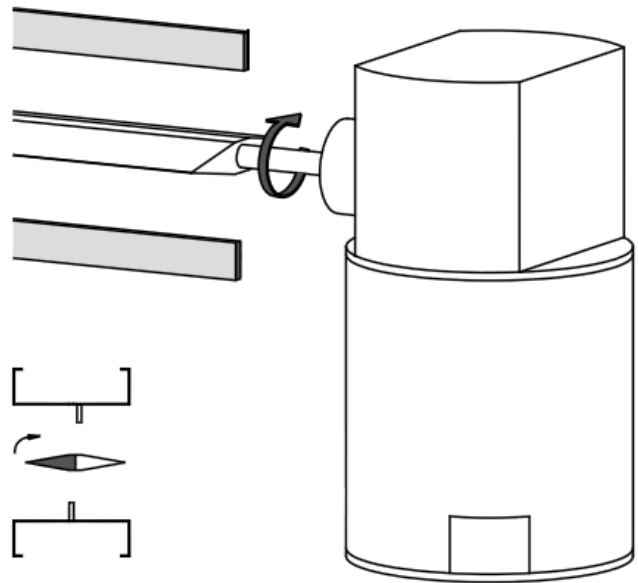


Rotary Direction "L". For Damper normally closed N.C.

MOTOR
Power: ON
Power on WIRE 2
Control: 2 .. 10 V



MOTOR or SPRING RETURN
Power: OFF
Power on WIRE 3
Control: 10 .. 2 V

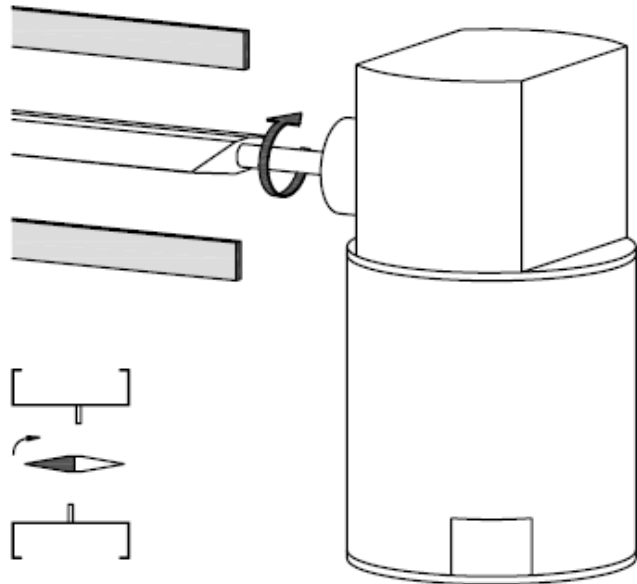


Subject to technical changes without notice. Rev. 00

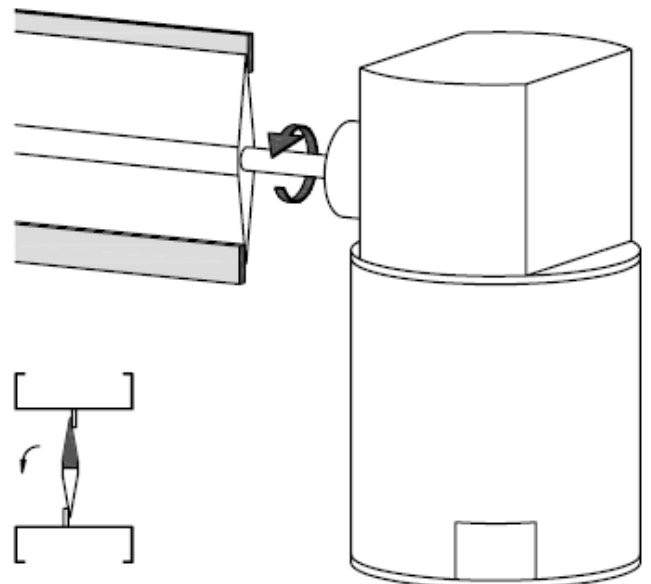


Rotary Direction "R". For Damper normally open N.O.

MOTOR
Power: ON
Power on WIRE 2
Control: 2 .. 10 V

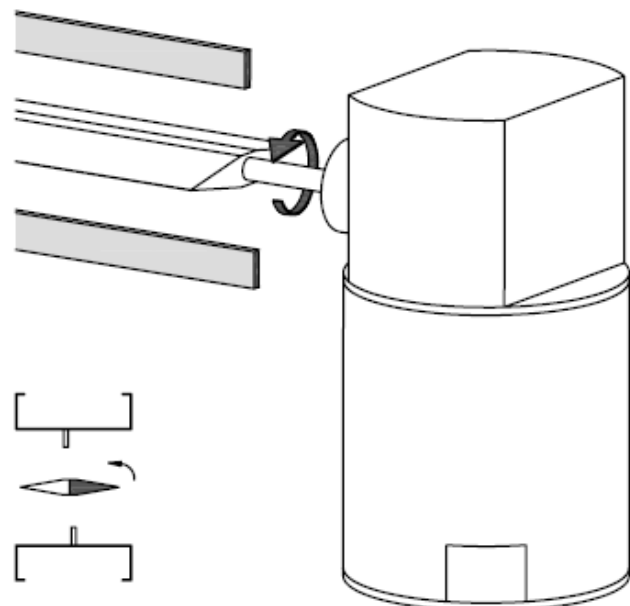


MOTOR or SPRING RETURN
Power: OFF
Power on WIRE 3
Control: 10 .. 2 V

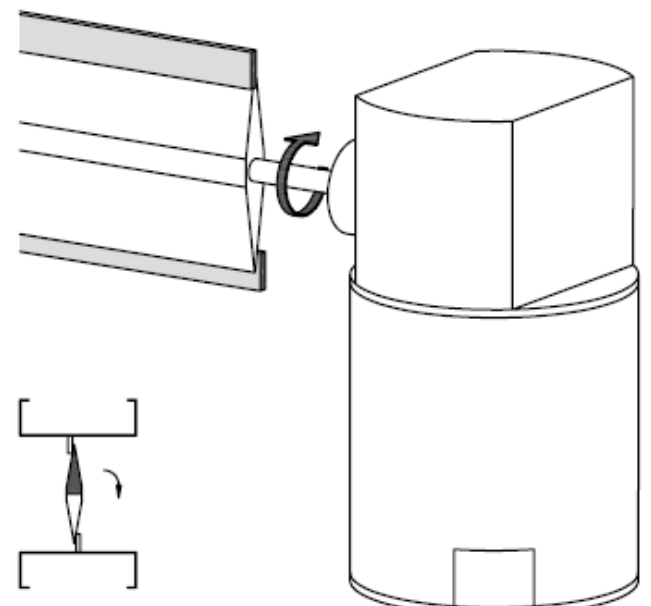


Rotary Direction "L". For Damper normally closed N.O.

MOTOR
Power: ON
Power on WIRE 2
Control: 2 .. 10 V

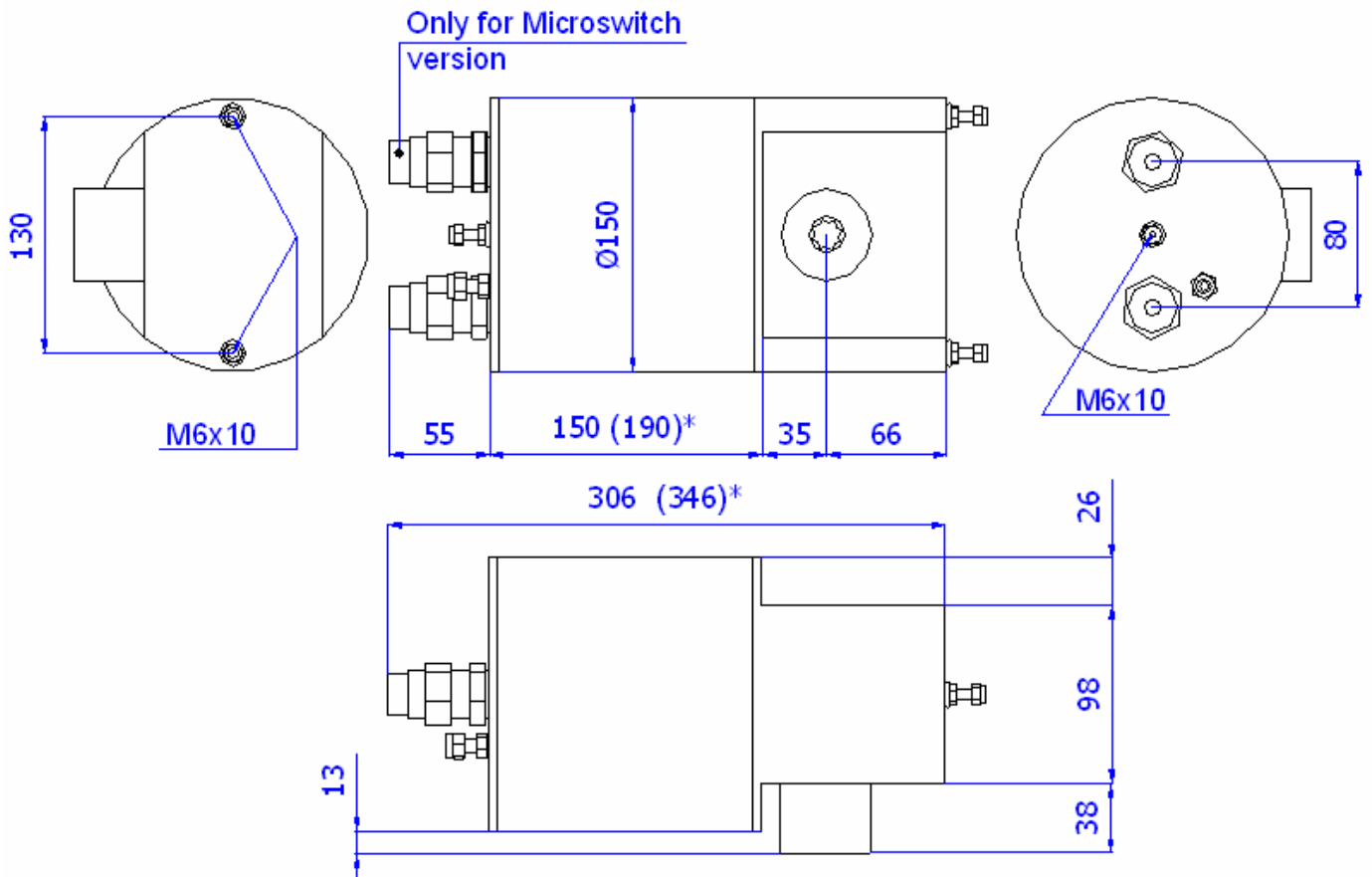


MOTOR or SPRING RETURN
Power: OFF
Power on WIRE 3
Control: 10 .. 2 V



Subject to technical changes without notice. Rev. 00

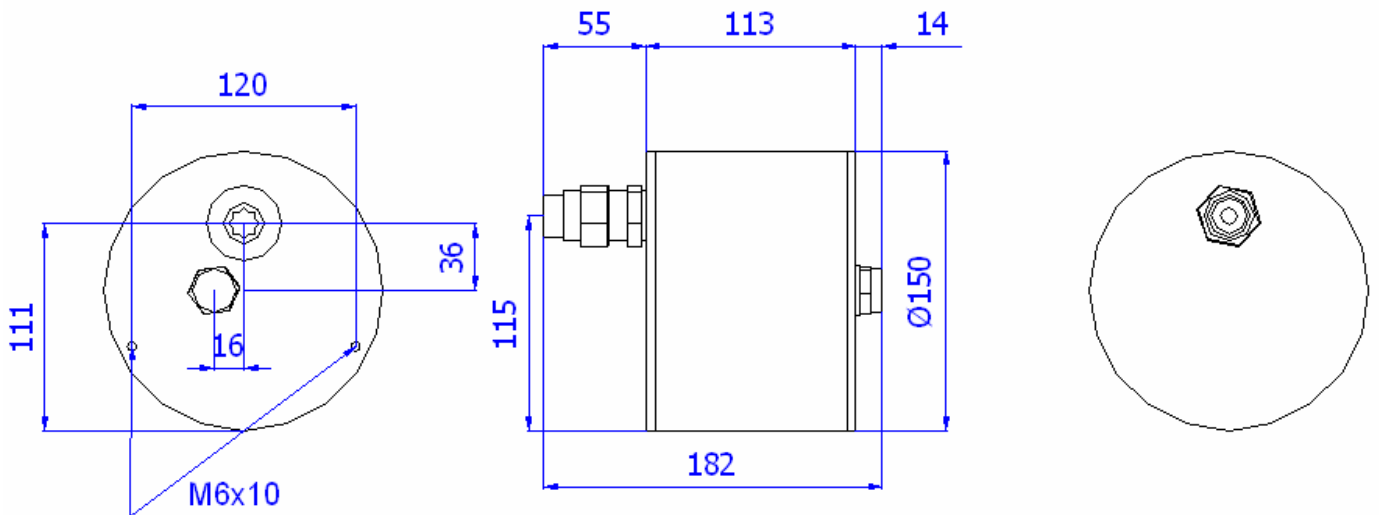
Dimensions and Mounting Instructions
EXAF - EXBF - EXBE - EXBG - EXSM - EXAM



*= Only series EXAF, EXBF, EXBG, EXBE

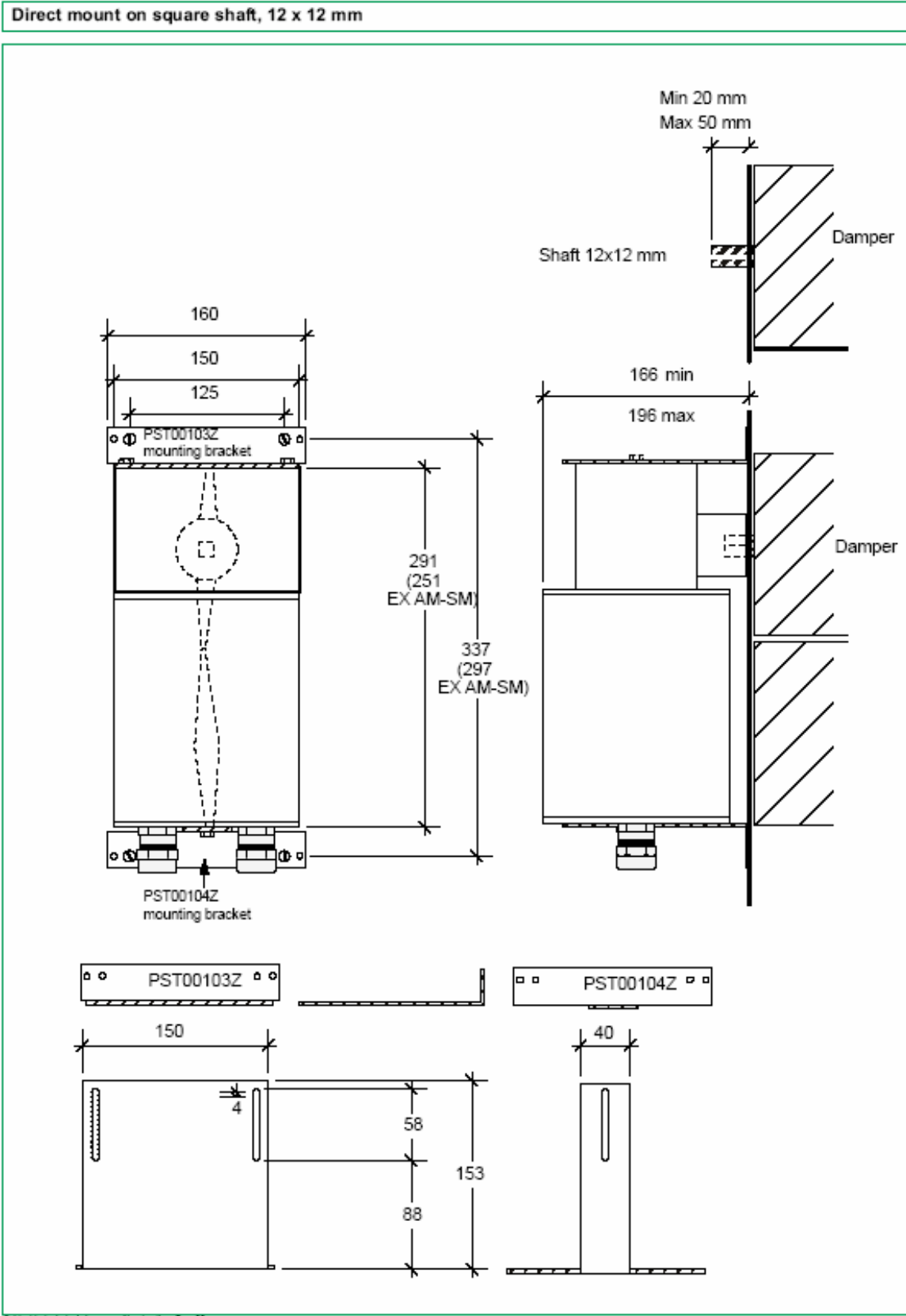
Note: Dimensions are specified in millimeters

EXNM

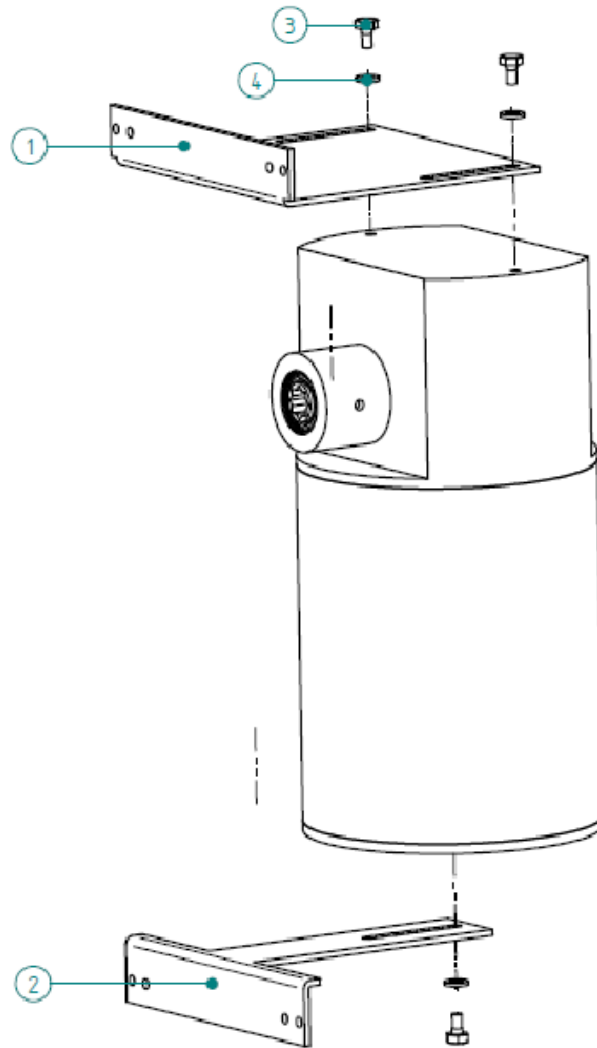


Note: Dimensions are specified in millimeters

Dimensions and Mounting Instructions
EXAF - EXBF - EXBE - EXBG - EXSM - EXAM



Dimensions and Mounting Instructions
EXAF - EXBF - EXBE - EXBG - EXSM - EXAM



n*	Code description
1	PST00103Z
2	PST00104Z
3	TDE M6 x 10
4	Flat washer

Mount the bracket as shown in the picture above.

Threaded hole depth: 8mm. Do not replace standard screws with other one;
or ensure that screws does not penetrate more than 7mm into the enclosure.

Flat washer dimension : Di= 6,4mm De=12mm h=1,6mm